

Datasheet for ABIN388688

**anti-KPNA4 antibody (C-Term)****1** Image**1** Publication[Go to Product page](#)

## Overview

Quantity:	400 µL
Target:	KPNA4
Binding Specificity:	AA 1-30, C-Term
Reactivity:	Human, Mouse
Host:	Rabbit
Clonality:	Polyclonal
Conjugate:	This KPNA4 antibody is un-conjugated
Application:	Western Blotting (WB)

## Product Details

Immunogen:	This Importin alpha-3 (KPNA4) antibody is generated from rabbits immunized with a KLH conjugated synthetic peptide between 1-30 amino acids from the C-terminal region of human Importin alpha-3 (KPNA4).
Clone:	RB9325
Isotype:	Ig Fraction
Purification:	This antibody is prepared by Saturated Ammonium Sulfate (SAS) precipitation followed by dialysis against PBS.

## Target Details

Target:	KPNA4
Alternative Name:	Importin alpha-4 (KPNA4) ( <a href="#">KPNA4 Products</a> )

## Target Details

Background:	The nuclear import of karyophilic proteins is directed by short amino acid sequences termed nuclear localization signals (NLSs). Karyopherins, or importins, are cytoplasmic proteins that recognize NLSs and dock NLS-containing proteins to the nuclear pore complex. The protein encoded by this gene shares the sequence similarity with <i>Xenopus</i> importin-alpha and <i>Saccharomyces cerevisiae</i> Srp1. This protein is found to interact with the NLSs of DNA helicase Q1 and SV40 T antigen.
Molecular Weight:	57887
Gene ID:	3840
NCBI Accession:	<a href="#">NP_002259</a>
UniProt:	<a href="#">O00629</a>
Pathways:	<a href="#">Protein targeting to Nucleus</a>

## Application Details

Application Notes:	WB: 1:1000
Restrictions:	For Research Use only

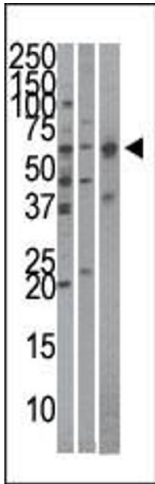
## Handling

Format:	Liquid
Buffer:	Purified polyclonal antibody supplied in PBS with 0.09 % (W/V) sodium azide.
Preservative:	Sodium azide
Precaution of Use:	This product contains Sodium azide: a POISONOUS AND HAZARDOUS SUBSTANCE which should be handled by trained staff only.
Storage:	4 °C,-20 °C
Storage Comment:	Maintain refrigerated at 2-8 °C for up to 6 months. For long term storage store at -20 °C in small aliquots to prevent freeze-thaw cycles.
Expiry Date:	6 months

## Publications

Product cited in:	Lei, Chen, Huang, Wu, Lin, Lai: "Proteomic analysis of the effect of extracellular calcium ions on human mesenchymal stem cells: Implications for bone tissue engineering." in: <b>Chemico-</b>
-------------------	---

**biological interactions**, Vol. 233, pp. 139-46, (2015) ([PubMed](#)).



**Western Blotting**

**Image 1.** The anti-Importin alpha-3 Pab (ABIN388688 and ABIN2838720) is used in Western blot to detect Importin alpha-3 in Hela (left), mouse brain (middle), and HepG2 (right) cell line/tissue lysates.