

Datasheet for ABIN388692

anti-NCAPH2 antibody (N-Term)[Go to Product page](#)**1** Image**2** Publications

Overview

Quantity:	400 µL
Target:	NCAPH2
Binding Specificity:	AA 198-227, N-Term
Reactivity:	Human
Host:	Rabbit
Clonality:	Polyclonal
Conjugate:	This NCAPH2 antibody is un-conjugated
Application:	Western Blotting (WB)

Product Details

Immunogen:	This NCAPH2 antibody is generated from rabbits immunized with a KLH conjugated synthetic peptide between 198-227 amino acids from the N-terminal region of human NCAPH2.
Clone:	RB9657
Isotype:	Ig Fraction
Purification:	This antibody is prepared by Saturated Ammonium Sulfate (SAS) precipitation followed by dialysis against PBS.

Target Details

Target:	NCAPH2
Alternative Name:	NCAPH2 (NCAPH2 Products)

Target Details

Background:	Structural maintenance of chromosomes (SMC) and non-SMC condensin proteins associate into complexes that have been implicated in the process of chromosome condensation. A crucial prerequisite for accurate segregation of replicated sister chromatids is the condensation of the chromosomes into a manageable form prior to metaphase. The condensin I complex consists of two SMC subunits, SMC2 and SMC4, and three non-SMC subunits, CAP-H, CAP-G, and CAP-D2. An alternative complex, the condensin II complex, contains alternate non-SMC subunits, CAP-G2, CAP-H2, and CAP-D3. CAP-H2 is also known as Non-SMC condensin II complex, subunit H2 (NCAPH2) or kleisin beta isoform 2. The three non-SMC subunits in the condensing complexes form a regulatory subcomplex that is required to activate the SMC ATPases and to promote mitosis-specific chromatin binding of the holocomplex. The precise individual functions of each non-SMC protein in activation remain to be determined.
Molecular Weight:	68227
Gene ID:	29781
NCBI Accession:	NP_001171940 , NP_055366 , NP_689512
UniProt:	Q6IBW4

Application Details

Application Notes:	WB: 1:1000
Restrictions:	For Research Use only

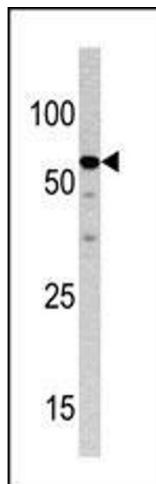
Handling

Format:	Liquid
Buffer:	Purified polyclonal antibody supplied in PBS with 0.09 % (W/V) sodium azide.
Preservative:	Sodium azide
Precaution of Use:	This product contains Sodium azide: a POISONOUS AND HAZARDOUS SUBSTANCE which should be handled by trained staff only.
Storage:	4 °C,-20 °C
Storage Comment:	Maintain refrigerated at 2-8 °C for up to 6 months. For long term storage store at -20 °C in small aliquots to prevent freeze-thaw cycles.
Expiry Date:	6 months

Publications

Product cited in: Lei, Chen, Huang, Wu, Lin, Lai: "Proteomic analysis of the effect of extracellular calcium ions on human mesenchymal stem cells: Implications for bone tissue engineering." in: **Chemico-biological interactions**, Vol. 233, pp. 139-46, (2015) ([PubMed](#)).

Images



Western Blotting

Image 1. Western blot analysis of anti-NCH2 Pab 1973a in HepG2 cell line lysate (35 µg/lane). NCH2(arrow) was detected using the purified Pab.