

Datasheet for ABIN388732

**anti-BMPR1A antibody (N-Term)**

4 Images

3 Publications

[Go to Product page](#)

## Overview

Quantity:	400 µL
Target:	BMPR1A
Binding Specificity:	AA 30-60, N-Term
Reactivity:	Human
Host:	Rabbit
Clonality:	Polyclonal
Application:	Western Blotting (WB), Immunohistochemistry (Paraffin-embedded Sections) (IHC (p))

## Product Details

Immunogen:	This BMPR1A antibody is generated from rabbits immunized with a KLH conjugated synthetic peptide between 30-60 amino acids from the N-terminal region of human BMPR1A.
Clone:	RB01766
Isotype:	Ig Fraction
Predicted Reactivity:	M, Rat
Purification:	This antibody is prepared by Saturated Ammonium Sulfate (SAS) precipitation followed by dialysis against PBS.

## Target Details

Target:	BMPR1A
Alternative Name:	BMPR1A ( <a href="#">BMPR1A Products</a> )

## Target Details

**Background:** The bone morphogenetic protein (BMP) receptors are a family of transmembrane serine/threonine kinases that include the type I receptors BMPR1A and BMPR1B and the type II receptor BMPR2. These receptors are also closely related to the activin receptors, ACVR1 and ACVR2. The ligands of these receptors are members of the TGF-beta superfamily. TGF-betas and activins transduce their signals through the formation of heteromeric complexes with 2 different types of serine (threonine) kinase receptors: type I receptors of about 50-55 kD and type II receptors of about 70-80 kD. Type II receptors bind ligands in the absence of type I receptors, but they require their respective type I receptors for signaling, whereas type I receptors require their respective type II receptors for ligand binding.

**Molecular Weight:** 60198

**Gene ID:** 657

**NCBI Accession:** [NP\\_004320](#)

**UniProt:** [P36894](#)

**Pathways:** [Stem Cell Maintenance](#)

## Application Details

**Application Notes:** WB: 1:1000. WB: 1:1000. WB: 1:1000. IHC-P: 1:50~100

**Restrictions:** For Research Use only

## Handling

**Format:** Liquid

**Buffer:** Purified polyclonal antibody supplied in PBS with 0.09 % (W/V) sodium azide.

**Preservative:** Sodium azide

**Precaution of Use:** This product contains Sodium azide: a POISONOUS AND HAZARDOUS SUBSTANCE which should be handled by trained staff only.

**Storage:** 4 °C,-20 °C

**Storage Comment:** Maintain refrigerated at 2-8 °C for up to 6 months. For long term storage store at -20 °C in small aliquots to prevent freeze-thaw cycles.

**Expiry Date:** 6 months

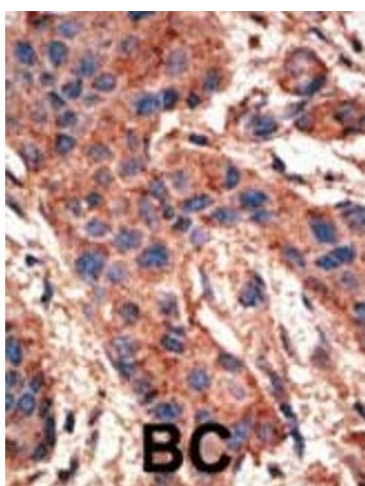
## Publications

Product cited in: Peng, Mukhopadhyay, Jarrett, Yoshikawa, Kessler: "BMP receptor 1A regulates development of hypothalamic circuits critical for feeding behavior." in: **The Journal of neuroscience : the official journal of the Society for Neuroscience**, Vol. 32, Issue 48, pp. 17211-24, (2012) ([PubMed](#)).

Kan, Liu, McGuire, Berger, Awatramani, Dymecki, Kessler: "Dysregulation of local stem/progenitor cells as a common cellular mechanism for heterotopic ossification." in: **Stem cells (Dayton, Ohio)**, Vol. 27, Issue 1, pp. 150-6, (2009) ([PubMed](#)).

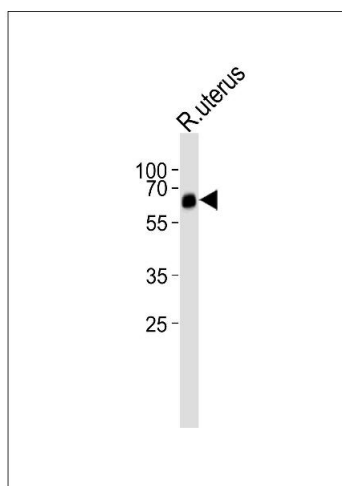
Mukhopadhyay, McGuire, Peng, Kessler: "Differential effects of BMP signaling on parvalbumin and somatostatin interneuron differentiation." in: **Development (Cambridge, England)**, Vol. 136, Issue 15, pp. 2633-42, (2009) ([PubMed](#)).

## Images



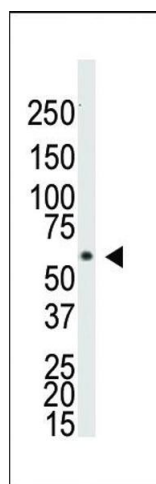
### Immunohistochemistry (Paraffin-embedded Sections)

**Image 1.** Formalin-fixed and paraffin-embedded human cancer tissue reacted with the primary antibody, which was peroxidase-conjugated to the secondary antibody, followed by AEC staining. This data demonstrates the use of this antibody for immunohistochemistry, clinical relevance has not been evaluated. BC = breast carcinoma, HC = hepatocarcinoma.



### Western Blotting

**Image 2.** Western blot analysis of lysate from rat uterus tissue lysate, using BR1A Antibody (E45) (ABIN388732 and ABIN2838941). (ABIN388732 and ABIN2838941) was diluted at 1:1000. A goat anti-rabbit IgG H&L(HRP) at 1:10000 dilution was used as the secondary antibody. Lysate at 35 µg.



#### Western Blotting

**Image 3.** Western blot analysis of anti-BR1A Pab ap2004a in Saos-2 cell lysate. BR1A (arrow) was detected using purified Pab. Secondary HRP-anti-rabbit was used for signal visualization with chemiluminescence.

Please check the [product details page](#) for more images. Overall 4 images are available for ABIN388732.