



[Go to Product page](#)

Datasheet for ABIN388736
anti-BMPR1A antibody (N-Term)

2 Images

Overview

Quantity:	400 µL
Target:	BMPR1A
Binding Specificity:	AA 1-30, N-Term
Reactivity:	Human, Mouse
Host:	Rabbit
Clonality:	Polyclonal
Application:	Western Blotting (WB), Flow Cytometry (FACS)

Product Details

Immunogen:	This BMPR1A antibody is generated from rabbits immunized with a KLH conjugated synthetic peptide between 1-30 amino acids from the N-terminal region of human BMPR1A.
Clone:	RB5391
Isotype:	Ig Fraction
Purification:	This antibody is prepared by Saturated Ammonium Sulfate (SAS) precipitation followed by dialysis against PBS.

Target Details

Target:	BMPR1A
Alternative Name:	BMPR1A (BMPR1A Products)
Background:	The bone morphogenetic protein (BMP) receptors are a family of transmembrane serine/threonine kinases that include the type I receptors BMPR1A and BMPR1B and the type II

Target Details

receptor BMPR2. These receptors are also closely related to the activin receptors, ACVR1 and ACVR2. The ligands of these receptors are members of the TGF-beta superfamily. TGF-betas and activins transduce their signals through the formation of heteromeric complexes with 2 different types of serine (threonine) kinase receptors: type I receptors of about 50-55 kD and type II receptors of about 70-80 kD. Type II receptors bind ligands in the absence of type I receptors, but they require their respective type I receptors for signaling, whereas type I receptors require their respective type II receptors for ligand binding. BMPRIA binds BMP4 with high-affinity in solution and is a potent BMP-4 antagonist in vitro. In adult tissues, BMPRIA is widely expressed, with the highest expression levels detected in skeletal muscle. BMPRIA is also widely expressed during embryogenesis.

Molecular Weight: 60198

Gene ID: 657

NCBI Accession: [NP_004320](#)

UniProt: [P36894](#)

Pathways: [Stem Cell Maintenance](#)

Application Details

Application Notes: WB: 1:1000. FC: 1:10~50

Restrictions: For Research Use only

Handling

Format: Liquid

Buffer: Purified polyclonal antibody supplied in PBS with 0.09 % (W/V) sodium azide.

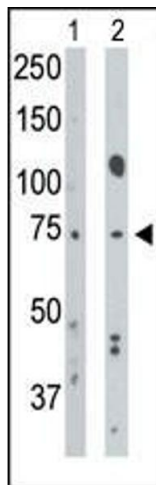
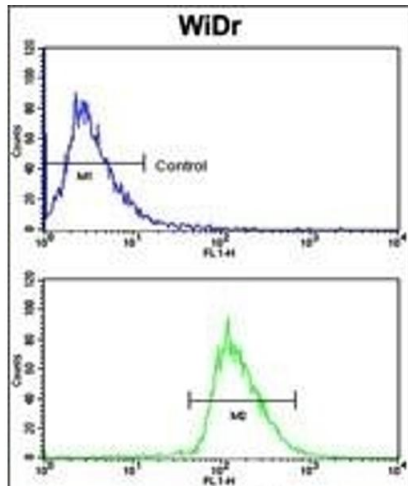
Preservative: Sodium azide

Precaution of Use: This product contains Sodium azide: a POISONOUS AND HAZARDOUS SUBSTANCE which should be handled by trained staff only.

Storage: 4 °C,-20 °C

Storage Comment: Maintain refrigerated at 2-8 °C for up to 6 months. For long term storage store at -20 °C in small aliquots to prevent freeze-thaw cycles.

Expiry Date: 6 months



Flow Cytometry

Image 1. Flow cytometric analysis of WiDr cells using BR1A Antibody (N-term) (bottom histogram) coated to a negative control cell (top histogram). FITC-conjugated goat-anti-rabbit secondary antibodies were used for the analysis.

Western Blotting

Image 2. The anti-BR1A Pab (ABIN388736 and ABIN2838944) is used in Western blot to detect BR1A in mouse muscle tissue lysate (Lane 1) and Hela cell lysate (Lane 2).