

Datasheet for ABIN388751
anti-LYVE1 antibody (N-Term)

5 Images

[Go to Product page](#)

Overview

Quantity:	400 µL
Target:	LYVE1
Binding Specificity:	AA 46-77, N-Term
Reactivity:	Human, Mouse
Host:	Rabbit
Clonality:	Polyclonal
Conjugate:	This LYVE1 antibody is un-conjugated
Application:	Western Blotting (WB), Immunohistochemistry (Paraffin-embedded Sections) (IHC (p))

Product Details

Immunogen:	This XLKD1 antibody is generated from rabbits immunized with a KLH conjugated synthetic peptide between 46-77 amino acids from the N-terminal region of human XLKD1.
Clone:	RB2930
Isotype:	Ig Fraction
Purification:	This antibody is prepared by Saturated Ammonium Sulfate (SAS) precipitation followed by dialysis against PBS.

Target Details

Target:	LYVE1
Alternative Name:	XLKD1 (LYVE1 Products)

Target Details

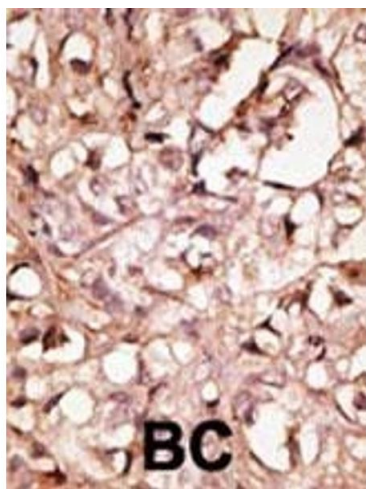
Background:	One of the key groups of molecules regulating leukocyte and tumour cell migration is the glycosaminoglycan hyaluronan (HA). In inflammation, the exit of leukocytes across vascular endothelium to the underlying tissues involves interactions with cell surface lectin-like receptors on the leukocytes that bind HA on the luminal surface of the endothelium. During normal tissue homeostasis and after tissue injury, HA is mobilized from these sites through lymphatic vessels to the lymph nodes where it is degraded before entering the circulation for rapid uptake by the liver. Lymphatic vessel endothelial hyaluronan receptor (LYVE)-1 is a major receptor for HA on the lymph vessel wall. LYVE-1 is expressed primarily on lymphatic vessel endothelium and is likely to be involved in regulating the traffic of leucocytes and tumour cells to lymph nodes.
Molecular Weight:	35213
Gene ID:	10894
NCBI Accession:	NP_006682
UniProt:	Q9Y5Y7
Pathways:	Glycosaminoglycan Metabolic Process

Application Details

Application Notes:	WB: 1:1000. WB: 1:1000. WB: 1:1000. WB: 1:2000. IHC-P: 1:50~100
Restrictions:	For Research Use only

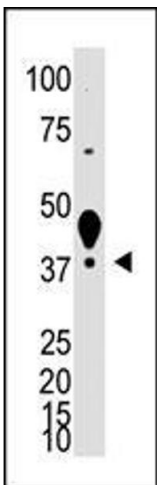
Handling

Format:	Liquid
Buffer:	Purified polyclonal antibody supplied in PBS with 0.09 % (W/V) sodium azide.
Preservative:	Sodium azide
Precaution of Use:	This product contains Sodium azide: a POISONOUS AND HAZARDOUS SUBSTANCE which should be handled by trained staff only.
Storage:	4 °C,-20 °C
Storage Comment:	Maintain refrigerated at 2-8 °C for up to 6 months. For long term storage store at -20 °C in small aliquots to prevent freeze-thaw cycles.
Expiry Date:	6 months



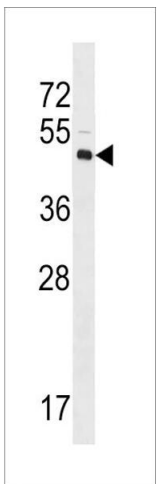
Immunohistochemistry (Paraffin-embedded Sections)

Image 1. Formalin-fixed and paraffin-embedded human cancer tissue reacted with the primary antibody, which was peroxidase-conjugated to the secondary antibody, followed by DAB staining. This data demonstrates the use of this antibody for immunohistochemistry, clinical relevance has not been evaluated. BC = breast carcinoma, HC = hepatocarcinoma.



Western Blotting

Image 2. The anti-XLKD1 N-term Pab (ABIN388751 and ABIN2839014) is used in Western blot to detect XLKD1 in mouse liver tissue lysate.



Western Blotting

Image 3. XLKD1 Antibody (N-term) (ABIN388751 and ABIN2839014) western blot analysis in Y79 cell line lysates (35 µg/lane). This demonstrates the XLKD1 antibody detected the XLKD1 protein (arrow).

Please check the [product details page](#) for more images. Overall 5 images are available for ABIN388751.