

Datasheet for ABIN388773
anti-PDX1 antibody (C-Term)[Go to Product page](#)

2 Images

Overview

Quantity:	400 µL
Target:	PDX1
Binding Specificity:	AA 429-459, C-Term
Reactivity:	Human
Host:	Rabbit
Clonality:	Polyclonal
Conjugate:	This PDX1 antibody is un-conjugated
Application:	Western Blotting (WB)

Product Details

Immunogen:	This PDX1 antibody is generated from rabbits immunized with a KLH conjugated synthetic peptide between 429-459 amino acids from the C-terminal region of human PDX1.
Clone:	RB02861-02862
Isotype:	Ig Fraction
Purification:	This antibody is prepared by Saturated Ammonium Sulfate (SAS) precipitation followed by dialysis against PBS.

Target Details

Target:	PDX1
Alternative Name:	PDX1 (PDX1 Products)

Target Details

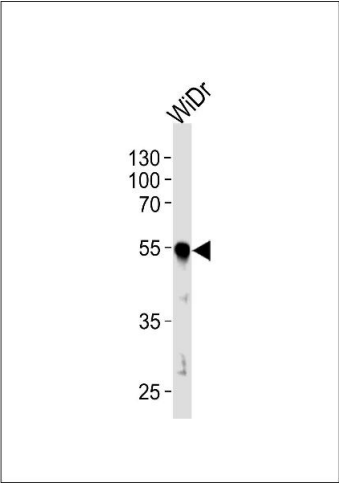
Background:	PDX1, located in the mitochondrial matrix, is required for anchoring dihydrolipoamide dehydrogenase (E3) to the dihydrolipoamide transacetylase (E2) core of the pyruvate dehydrogenase complexes of eukaryotes. This specific binding is essential for a functional PDH complex. Eukaryotic pyruvate dehydrogenase complexes are organized about a core consisting of the oligomeric dihydrolipoamide acetyl-transferase, around which are arranged multiple copies of pyruvate dehydrogenase, dihydrolipoamide dehydrogenase and protein X bound by noncovalent bonds. Defects in PDHX are a cause of lacticacidemia. PDX1 belongs to the 2-oxoacid dehydrogenase family and contains 1 lipoyl-binding domain.
Molecular Weight:	54122
Gene ID:	8050
NCBI Accession:	NP_001128496 , NP_001159630 , NP_003468
UniProt:	O00330
Pathways:	Nuclear Receptor Transcription Pathway , Positive Regulation of Peptide Hormone Secretion , Steroid Hormone Mediated Signaling Pathway , Hormone Transport , Carbohydrate Homeostasis , Chromatin Binding , Maintenance of Protein Location

Application Details

Application Notes:	WB: 1:1000. WB: 1:1000
Restrictions:	For Research Use only

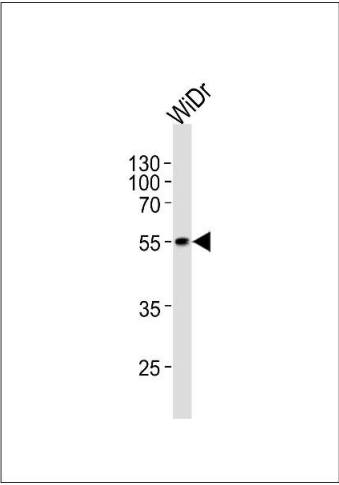
Handling

Format:	Liquid
Buffer:	Purified polyclonal antibody supplied in PBS with 0.09 % (W/V) sodium azide.
Preservative:	Sodium azide
Precaution of Use:	This product contains Sodium azide: a POISONOUS AND HAZARDOUS SUBSTANCE which should be handled by trained staff only.
Storage:	4 °C,-20 °C
Storage Comment:	Maintain refrigerated at 2-8 °C for up to 6 months. For long term storage store at -20 °C in small aliquots to prevent freeze-thaw cycles.
Expiry Date:	6 months



Western Blotting

Image 1. Western blot analysis of lysate from WiDr cell line, using hPDX1 (ABIN388773 and ABIN2839108). (ABIN388773 and ABIN2839108) was diluted at 1:1000 at each lane. A goat anti-rabbit IgG H&L(HRP) at 1:5000 dilution was used as the secondary antibody. Lysate at 35 μ g per lane.



Western Blotting

Image 2. Western blot analysis of lysate from WiDr cell line, using hPDX1 (ABIN388773 and ABIN2839108). (ABIN388773 and ABIN2839108) was diluted at 1:1000 at each lane. A goat anti-rabbit IgG H&L(HRP) at 1:5000 dilution was used as the secondary antibody. Lysate at 35 μ g per lane.