

Datasheet for ABIN388774
anti-PDX1 antibody (AA 1-30)[Go to Product page](#)

4 Images

Overview

Quantity:	400 µL
Target:	PDX1
Binding Specificity:	AA 1-30
Reactivity:	Human
Host:	Rabbit
Clonality:	Polyclonal
Conjugate:	This PDX1 antibody is un-conjugated
Application:	Western Blotting (WB), Immunohistochemistry (Paraffin-embedded Sections) (IHC (p)), Immunofluorescence (IF)

Product Details

Immunogen:	This PDX1 antibody is generated from rabbits immunized with a KLH conjugated synthetic peptide between 1-30 amino acids from human PDX1.
Clone:	RB15204
Isotype:	Ig Fraction
Predicted Reactivity:	M, Rat
Purification:	This antibody is purified through a protein A column, followed by peptide affinity purification.

Target Details

Target:	PDX1
---------	------

Target Details

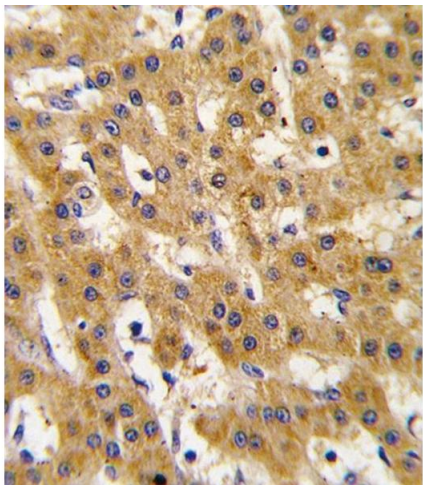
Alternative Name:	PDX1 (PDX1 Products)
Background:	<p>PDX1, located in the mitochondrial matrix, is required for anchoring dihydrolipoamide dehydrogenase (E3) to the dihydrolipoamide transacetylase (E2) core of the pyruvate dehydrogenase complexes of eukaryotes. This specific binding is essential for a functional PDH complex. Eukaryotic pyruvate dehydrogenase complexes are organized about a core consisting of the oligomeric dihydrolipoamide acetyl-transferase, around which are arranged multiple copies of pyruvate dehydrogenase, dihydrolipoamide dehydrogenase and protein X bound by noncovalent bonds. Defects in PDHX are a cause of lacticacidemia. PDX1 belongs to the 2-oxoacid dehydrogenase family and contains 1 lipoyl-binding domain.</p>
Molecular Weight:	54122
Gene ID:	8050
NCBI Accession:	NP_001128496 , NP_001159630 , NP_003468
UniProt:	O00330
Pathways:	Nuclear Receptor Transcription Pathway , Positive Regulation of Peptide Hormone Secretion , Steroid Hormone Mediated Signaling Pathway , Hormone Transport , Carbohydrate Homeostasis , Chromatin Binding , Maintenance of Protein Location

Application Details

Application Notes:	IF: 1:100. WB: 1:1000. WB: 1:1000. IHC-P: 1:10~50
Restrictions:	For Research Use only

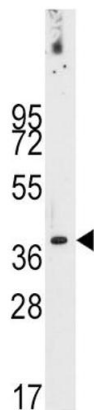
Handling

Format:	Liquid
Buffer:	Purified polyclonal antibody supplied in PBS with 0.09 % (W/V) sodium azide.
Preservative:	Sodium azide
Precaution of Use:	This product contains Sodium azide: a POISONOUS AND HAZARDOUS SUBSTANCE which should be handled by trained staff only.
Storage:	4 °C, -20 °C
Storage Comment:	Maintain refrigerated at 2-8 °C for up to 6 months. For long term storage store at -20 °C in small aliquots to prevent freeze-thaw cycles.



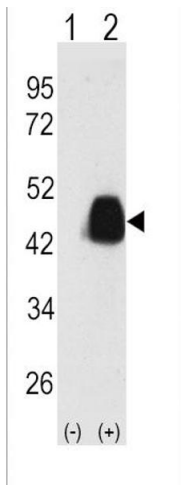
Immunohistochemistry (Paraffin-embedded Sections)

Image 1. Formalin-fixed and paraffin-embedded human hepatocarcinoma tissue reacted with Phospho-PDX1-T11.ctrl antibody, which was peroxidase-conjugated to the secondary antibody, followed by DAB staining. This data demonstrates the use of this antibody for immunohistochemistry, clinical relevance has not been evaluated.



Western Blotting

Image 2. Western blot analysis of anti-PDX1 Antibody (T11) (ABIN388774 and ABIN2839109) in NCI- cell line lysates (35 µg/lane).PDX1-T11(arrow) was detected using the purified Pab.



Western Blotting

Image 3. Western blot analysis of PDX1 (arrow) using PDX1 Antibody (T11) (ABIN388774 and ABIN2839109). 293 cell lysates (2 µg/lane) either nontransfected (Lane 1) or transiently transfected with the PDX1 gene (Lane 2) (Origene Technologies).

Please check the [product details page](#) for more images. Overall 4 images are available for ABIN388774.