



[Go to Product page](#)

Datasheet for ABIN388813
anti-GDF10 antibody (N-Term)

2 Images

Overview

Quantity:	400 µL
Target:	GDF10
Binding Specificity:	AA 33-62, N-Term
Reactivity:	Human
Host:	Rabbit
Clonality:	Polyclonal
Conjugate:	This GDF10 antibody is un-conjugated
Application:	Western Blotting (WB), Immunohistochemistry (Paraffin-embedded Sections) (IHC (p))

Product Details

Immunogen:	This GDF10 antibody is generated from rabbits immunized with a KLH conjugated synthetic peptide between 33-62 amino acids from the N-terminal region of human GDF10.
Clone:	RB1873
Isotype:	Ig Fraction
Purification:	This antibody is prepared by Saturated Ammonium Sulfate (SAS) precipitation followed by dialysis against PBS.

Target Details

Target:	GDF10
Alternative Name:	GDF10 (GDF10 Products)

Target Details

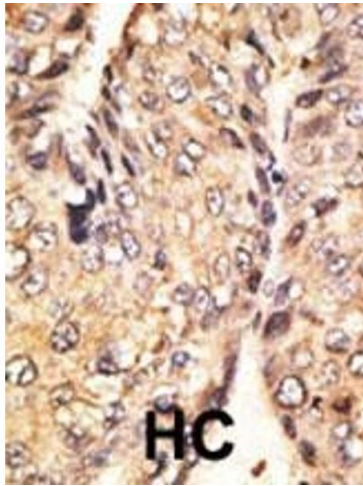
Background:	GDF10 is a member of the bone morphogenetic protein (BMP) family and the TGF-beta superfamily. This group of proteins is characterized by a polybasic proteolytic processing site which is cleaved to produce a mature protein containing seven conserved cysteine residues. The members of this family are regulators of cell growth and differentiation in both embryonic and adult tissues. Studies in mice suggest that the protein encoded by this gene plays a role in skeletal morphogenesis.
Molecular Weight:	53122
Gene ID:	2662
NCBI Accession:	NP_004953
UniProt:	P55107

Application Details

Application Notes:	WB: 1:1000. IHC-P: 1:50~100
Restrictions:	For Research Use only

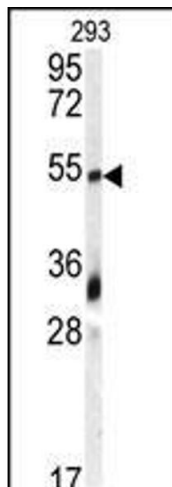
Handling

Format:	Liquid
Buffer:	Purified polyclonal antibody supplied in PBS with 0.09 % (W/V) sodium azide.
Preservative:	Sodium azide
Precaution of Use:	This product contains Sodium azide: a POISONOUS AND HAZARDOUS SUBSTANCE which should be handled by trained staff only.
Storage:	4 °C, -20 °C
Storage Comment:	Maintain refrigerated at 2-8 °C for up to 6 months. For long term storage store at -20 °C in small aliquots to prevent freeze-thaw cycles.
Expiry Date:	6 months



Immunohistochemistry (Paraffin-embedded Sections)

Image 1. Formalin-fixed and paraffin-embedded human cancer tissue reacted with the primary antibody, which was peroxidase-conjugated to the secondary antibody, followed by DAB staining. This data demonstrates the use of this antibody for immunohistochemistry, clinical relevance has not been evaluated. BC = breast carcinoma, HC = hepatocarcinoma.



Western Blotting

Image 2. Western blot analysis of anti-GDF10 Antibody (N-term) (ABIN388813 and ABIN2839131) in 293 cell line lysates (35 µg/lane). GDF10 (arrow) was detected using the purified Pab.