

Datasheet for ABIN388814
anti-GDF11 antibody (N-Term)

3 Images

[Go to Product page](#)

Overview

Quantity:	400 µL
Target:	GDF11
Binding Specificity:	AA 32-61, N-Term
Reactivity:	Human, Mouse
Host:	Rabbit
Clonality:	Polyclonal
Conjugate:	This GDF11 antibody is un-conjugated
Application:	Western Blotting (WB), Immunohistochemistry (Paraffin-embedded Sections) (IHC (p))

Product Details

Immunogen:	This GDF11 antibody is generated from rabbits immunized with a KLH conjugated synthetic peptide between 32-61 amino acids from the N-terminal region of human GDF11.
Clone:	RB01875-01876
Isotype:	Ig Fraction
Purification:	This antibody is purified through a protein A column, followed by peptide affinity purification.

Target Details

Target:	GDF11
Alternative Name:	GDF11 (GDF11 Products)
Background:	GDF11 is a member of the bone morphogenetic protein (BMP) family and the TGF-beta

Target Details

superfamily. This group of proteins is characterized by a polybasic proteolytic processing site which is cleaved to produce a mature protein containing seven conserved cysteine residues. The members of this family are regulators of cell growth and differentiation in both embryonic and adult tissues. Studies in mice and *Xenopus* suggest that this protein is involved in mesodermal formation and neurogenesis during embryonic development.

Molecular Weight: 45091

Gene ID: 10220

NCBI Accession: [NP_005802](#)

UniProt: [O95390](#)

Application Details

Application Notes: WB: 1:2000. IHC-P: 1:10~50. IHC-P: 1:10~50

Restrictions: For Research Use only

Handling

Format: Liquid

Buffer: Purified polyclonal antibody supplied in PBS with 0.09 % (W/V) sodium azide.

Preservative: Sodium azide

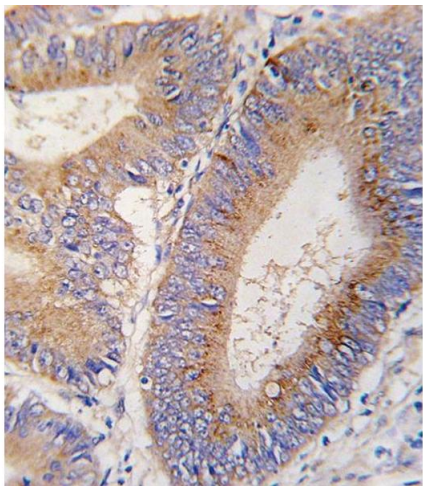
Precaution of Use: This product contains Sodium azide: a POISONOUS AND HAZARDOUS SUBSTANCE which should be handled by trained staff only.

Handling Advice: Avoid freeze-thaw cycles.

Storage: 4 °C, -20 °C

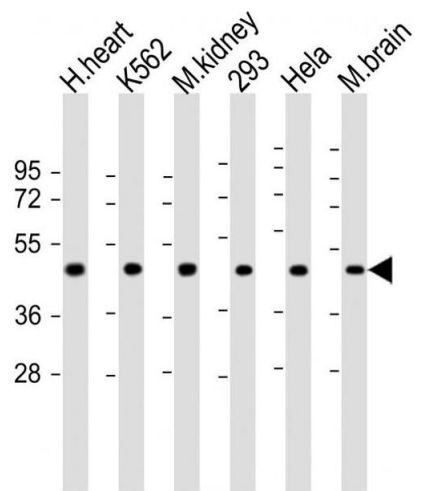
Storage Comment: Maintain refrigerated at 2-8 °C for up to 6 months. For long term storage store at -20 °C in small aliquots.

Expiry Date: 6 months



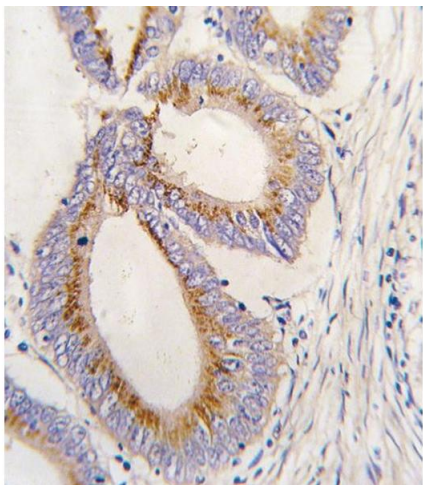
Immunohistochemistry (Paraffin-embedded Sections)

Image 1. Formalin-fixed and paraffin-embedded human colon carcinoma tissue reacted with GDF11 antibody (N-term) (ABIN388814 and ABIN2839133) , which was peroxidase-conjugated to the secondary antibody, followed by DAB staining. This data demonstrates the use of this antibody for immunohistochemistry, clinical relevance has not been evaluated.



Western Blotting

Image 2. All lanes : Anti-hGDF11-R47 at 1:2000 dilution Lane 1: human heart lysate Lane 2: K562 whole cell lysate Lane 3: mouse kidney lysate Lane 4: 293 whole cell lysate Lane 5: HeLa whole cell lysate Lane 6: mouse brain lysate Lysates/proteins at 20 µg per lane. Secondary Goat Anti-Rabbit IgG, (H+L), Peroxidase conjugated at 1/10000 dilution. Predicted band size : 45 kDa Blocking/Dilution buffer: 5 % NFDM/TBST.



Immunohistochemistry (Paraffin-embedded Sections)

Image 3. Formalin-fixed and paraffin-embedded human colon carcinoma tissue reacted with GDF11 antibody (N-term) (ABIN388814 and ABIN2839133) , which was peroxidase-conjugated to the secondary antibody, followed by DAB staining. This data demonstrates the use of this antibody for immunohistochemistry, clinical relevance has not been evaluated.