

Datasheet for ABIN388816  
**anti-GDF1 antibody (N-Term)**

## 2 Images

[Go to Product page](#)

## Overview

Quantity:	400 µL
Target:	GDF1
Binding Specificity:	AA 30-59, N-Term
Reactivity:	Human
Host:	Rabbit
Clonality:	Polyclonal
Conjugate:	This GDF1 antibody is un-conjugated
Application:	Western Blotting (WB), Immunohistochemistry (Paraffin-embedded Sections) (IHC (p))

## Product Details

Immunogen:	This GDF1 antibody is generated from rabbits immunized with a KLH conjugated synthetic peptide between 30-59 amino acids from the N-terminal region of human GDF1.
Clone:	RB1872
Isotype:	Ig Fraction
Purification:	This antibody is prepared by Saturated Ammonium Sulfate (SAS) precipitation followed by dialysis against PBS.

## Target Details

Target:	GDF1
Alternative Name:	GDF1 ( <a href="#">GDF1 Products</a> )

## Target Details

---

**Background:** GDF1 is a member of the bone morphogenetic protein (BMP) family and the TGF-beta superfamily. This group of proteins is characterized by a polybasic proteolytic processing site which is cleaved to produce a mature protein containing seven conserved cysteine residues. The members of this family are regulators of cell growth and differentiation in both embryonic and adult tissues. Studies in rodents suggest that this protein is involved in the establishment of left-right assymetry in early embryogenesis and in neural development in later embryogenesis. This protein is transcribed from a bicistronic mRNA which also encodes the longevity assurance gene.

---

**Molecular Weight:** 39475

---

**Gene ID:** 2657

---

**NCBI Accession:** [NP\\_001483](#)

---

**UniProt:** [P27539](#)

## Application Details

---

**Application Notes:** WB: 1:1000. IHC-P: 1:10~50

---

**Restrictions:** For Research Use only

## Handling

---

**Format:** Liquid

---

**Buffer:** Purified polyclonal antibody supplied in PBS with 0.09 % (W/V) sodium azide.

---

**Preservative:** Sodium azide

---

**Precaution of Use:** This product contains Sodium azide: a POISONOUS AND HAZARDOUS SUBSTANCE which should be handled by trained staff only.

---

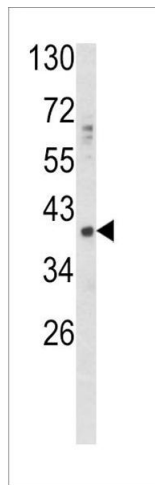
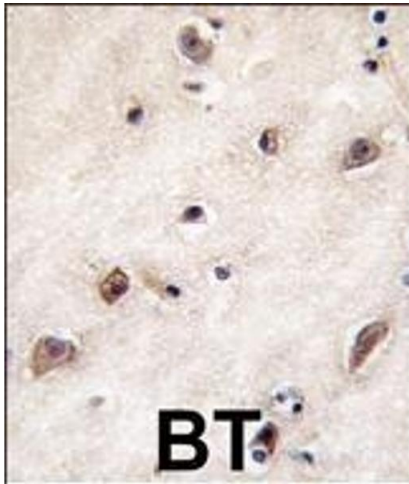
**Storage:** 4 °C,-20 °C

---

**Storage Comment:** Maintain refrigerated at 2-8 °C for up to 6 months. For long term storage store at -20 °C in small aliquots to prevent freeze-thaw cycles.

---

**Expiry Date:** 6 months



### Immunohistochemistry (Paraffin-embedded Sections)

**Image 1.** Formalin-fixed and paraffin-embedded human brain tissue reacted with GDF1 antibody (N-term), which was peroxidase-conjugated to the secondary antibody, followed by DAB staining. This data demonstrates the use of this antibody for immunohistochemistry, clinical relevance has not been evaluated.

### Western Blotting

**Image 2.** Western blot analysis of GDF1 Antibody (N-term) (ABIN388816 and ABIN2839134) in HepG2 cell line lysates (35 µg/lane). GDF1 (arrow) was detected using the purified Pab.