

Datasheet for ABIN388818  
**anti-GDF3 antibody (N-Term)**

## 2 Images

[Go to Product page](#)

## Overview

Quantity:	400 µL
Target:	GDF3
Binding Specificity:	AA 21-52, N-Term
Reactivity:	Human, Mouse
Host:	Rabbit
Clonality:	Polyclonal
Conjugate:	This GDF3 antibody is un-conjugated
Application:	Western Blotting (WB), Immunohistochemistry (Paraffin-embedded Sections) (IHC (p))

## Product Details

Immunogen:	This GDF3 antibody is generated from rabbits immunized with a KLH conjugated synthetic peptide between 21-52 amino acids from the N-terminal region of human GDF3.
Clone:	RB2233
Isotype:	Ig Fraction
Purification:	This antibody is prepared by Saturated Ammonium Sulfate (SAS) precipitation followed by dialysis against PBS.

## Target Details

Target:	GDF3
Alternative Name:	GDF3 ( <a href="#">GDF3 Products</a> )

## Target Details

**Background:** GDF3 is a member of the bone morphogenetic protein (BMP) family and the TGF-beta superfamily. This group of proteins is characterized by a polybasic proteolytic processing site which is cleaved to produce a mature protein containing seven conserved cysteine residues. The members of this family are regulators of cell growth and differentiation in both embryonic and adult tissues. The function of this protein is unknown, but expression studies suggest it may be involved in regulation of the adult lymphatic and erythroid systems and embryonic development.

**Molecular Weight:** 41387

**Gene ID:** 9573

**NCBI Accession:** [NP\\_065685](#)

**UniProt:** [Q9NR23](#)

## Application Details

**Application Notes:** WB: 1:1000. IHC-P: 1:50~100

**Restrictions:** For Research Use only

## Handling

**Format:** Liquid

**Buffer:** Purified polyclonal antibody supplied in PBS with 0.09 % (W/V) sodium azide.

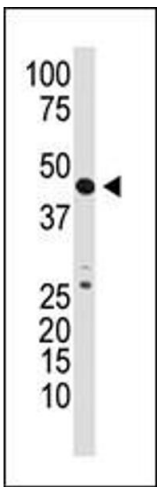
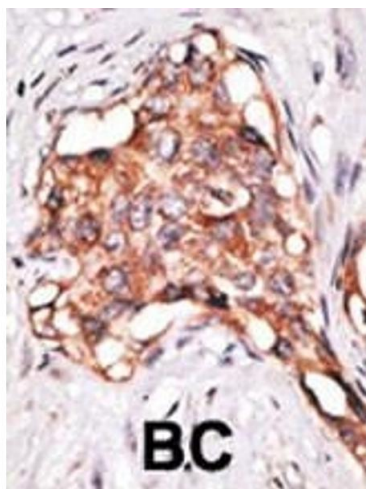
**Preservative:** Sodium azide

**Precaution of Use:** This product contains Sodium azide: a POISONOUS AND HAZARDOUS SUBSTANCE which should be handled by trained staff only.

**Storage:** 4 °C, -20 °C

**Storage Comment:** Maintain refrigerated at 2-8 °C for up to 6 months. For long term storage store at -20 °C in small aliquots to prevent freeze-thaw cycles.

**Expiry Date:** 6 months



**Immunohistochemistry (Paraffin-embedded Sections)**

**Image 1.** Formalin-fixed and paraffin-embedded human cancer tissue reacted with the primary antibody, which was peroxidase-conjugated to the secondary antibody, followed by DAB staining. This data demonstrates the use of this antibody for immunohistochemistry, clinical relevance has not been evaluated. BC = breast carcinoma, HC = hepatocarcinoma.

**Western Blotting**

**Image 2.** The anti-GDF3 N-term Pab (ABIN388818 and ABIN2839136) is used in Western blot to detect GDF3 in mouse kidney tissue lysate.