

Datasheet for ABIN388848  
**anti-UBE2B antibody (C-Term)**[Go to Product page](#)

## 3 Images

## Overview

Quantity:	400 µL
Target:	UBE2B
Binding Specificity:	AA 117-146, C-Term
Reactivity:	Human
Host:	Rabbit
Clonality:	Polyclonal
Conjugate:	This UBE2B antibody is un-conjugated
Application:	Western Blotting (WB), Immunohistochemistry (Paraffin-embedded Sections) (IHC (p))

## Product Details

Immunogen:	This UBE2B antibody is generated from rabbits immunized with a KLH conjugated synthetic peptide between 117-146 amino acids from the C-terminal region of human UBE2B.
Clone:	RB4331
Isotype:	Ig Fraction
Predicted Reactivity:	M, B, Rb, Rat
Purification:	This antibody is prepared by Saturated Ammonium Sulfate (SAS) precipitation followed by dialysis against PBS.

## Target Details

Target:	UBE2B
---------	-------

## Target Details

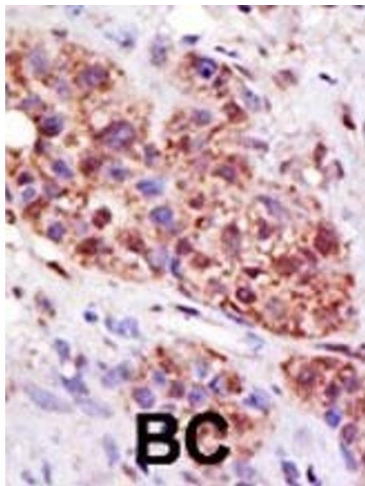
Alternative Name:	UBE2B ( <a href="#">UBE2B Products</a> )
Target Type:	Viral Protein
Background:	The modification of proteins with ubiquitin is an important cellular mechanism for targeting abnormal or short-lived proteins for degradation. Ubiquitination involves at least three classes of enzymes: ubiquitin-activating enzymes, or E1s, ubiquitin-conjugating enzymes, or E2s, and ubiquitin-protein ligases, or E3s. UBE2B is a member of the E2 ubiquitin-conjugating enzyme family. This enzyme is required for post-replicative DNA damage repair. Its protein sequence is 100 % identical to the mouse, rat, and rabbit homologs, which indicates that this enzyme is highly conserved in eukaryotic evolution.
Molecular Weight:	17312
Gene ID:	7320
NCBI Accession:	<a href="#">NP_003328</a>
UniProt:	<a href="#">P63146</a>

## Application Details

Application Notes:	WB: 1:1000. WB: 1:1000. IHC-P: 1:50~100
Restrictions:	For Research Use only

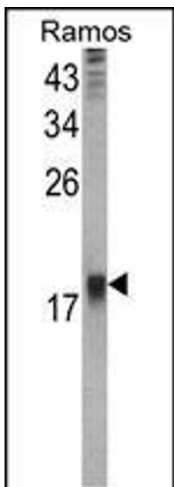
## Handling

Format:	Liquid
Buffer:	Purified polyclonal antibody supplied in PBS with 0.09 % (W/V) sodium azide.
Preservative:	Sodium azide
Precaution of Use:	This product contains Sodium azide: a POISONOUS AND HAZARDOUS SUBSTANCE which should be handled by trained staff only.
Storage:	4 °C, -20 °C
Storage Comment:	Maintain refrigerated at 2-8 °C for up to 6 months. For long term storage store at -20 °C in small aliquots to prevent freeze-thaw cycles.
Expiry Date:	6 months



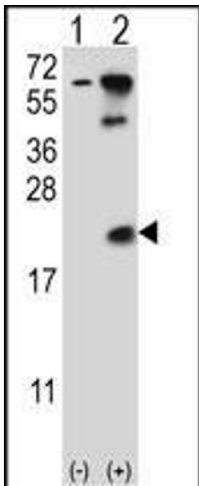
**Immunohistochemistry (Paraffin-embedded Sections)**

**Image 1.** Formalin-fixed and paraffin-embedded human cancer tissue reacted with the primary antibody, which was peroxidase-conjugated to the secondary antibody, followed by DAB staining. This data demonstrates the use of this antibody for immunohistochemistry, clinical relevance has not been evaluated. BC = breast carcinoma, HC = hepatocarcinoma.



**Western Blotting**

**Image 2.** Western blot analysis of UBE2B Antibody (C-term) (ABIN388848 and ABIN2839152) in Ramos cell line lysates (35 µg/lane). UBE2B (arrow) was detected using the purified Pab.



**Western Blotting**

**Image 3.** Western blot analysis of UBE2B (arrow) using rabbit polyclonal UBE2B Antibody (ABIN388848 and ABIN2839152). 293 cell lysates (2 µg/lane) either nontransfected (Lane 1) or transiently transfected (Lane 2) with the UBE2B gene.