

Datasheet for ABIN388856

anti-UBE2C antibody (N-Term)[Go to Product page](#)**1** Image

Overview

Quantity:	400 µL
Target:	UBE2C
Binding Specificity:	AA 10-39, N-Term
Reactivity:	Human
Host:	Rabbit
Clonality:	Polyclonal
Application:	Western Blotting (WB)

Product Details

Immunogen:	This UBE2C antibody is generated from rabbits immunized with a KLH conjugated synthetic peptide between 10-39 amino acids from the N-terminal region of human UBE2C.
Clone:	RB18249
Isotype:	Ig Fraction
Predicted Reactivity:	B, Pr, M
Purification:	This antibody is prepared by Saturated Ammonium Sulfate (SAS) precipitation followed by dialysis against PBS.

Target Details

Target:	UBE2C
Alternative Name:	UBE2C (UBE2C Products)

Target Details

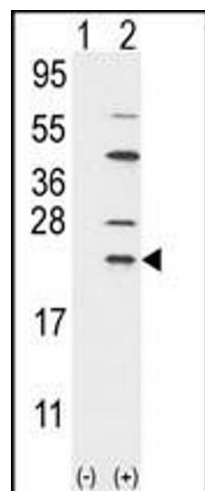
Background:	The modification of proteins with ubiquitin is an important cellular mechanism for targeting abnormal or short-lived proteins for degradation. Ubiquitination involves at least three classes of enzymes: ubiquitin-activating enzymes, or E1s, ubiquitin-conjugating enzymes, or E2s, and ubiquitin-protein ligases, or E3s. UBE2C is a member of the E2 ubiquitin-conjugating enzyme family. This enzyme is required for the destruction of mitotic cyclins and for cell cycle progression.
Molecular Weight:	19652
Gene ID:	11065
NCBI Accession:	NP_001268670 , NP_001268671 , NP_008950 , NP_861515 , NP_861516 , NP_861517
UniProt:	O00762
Pathways:	Ubiquitin Proteasome Pathway

Application Details

Application Notes:	WB: 1:1000
Restrictions:	For Research Use only

Handling

Format:	Liquid
Buffer:	Purified polyclonal antibody supplied in PBS with 0.09 % (W/V) sodium azide.
Preservative:	Sodium azide
Precaution of Use:	This product contains Sodium azide: a POISONOUS AND HAZARDOUS SUBSTANCE which should be handled by trained staff only.
Storage:	4 °C,-20 °C
Storage Comment:	Maintain refrigerated at 2-8 °C for up to 6 months. For long term storage store at -20 °C in small aliquots to prevent freeze-thaw cycles.
Expiry Date:	6 months



Western Blotting

Image 1. Western blot analysis of UBE2C (arrow) using rabbit polyclonal UBE2C Antibody (N-term G25) (ABIN388856 and ABIN2839158). 293 cell lysates (2 μ g/lane) either nontransfected (Lane 1) or transiently transfected with the UBE2C gene (Lane 2) (Origene Technologies).(8 μ g/mL)