

Datasheet for ABIN388933
anti-EPS15 antibody (C-Term)[Go to Product page](#)

1 Image

Overview

| | |
|----------------------|--------------------------------------|
| Quantity: | 400 µL |
| Target: | EPS15 |
| Binding Specificity: | AA 840-870, C-Term |
| Reactivity: | Human |
| Host: | Rabbit |
| Clonality: | Polyclonal |
| Conjugate: | This EPS15 antibody is un-conjugated |
| Application: | Western Blotting (WB) |

Product Details

| | |
|-----------------------|--|
| Immunogen: | This EPS15 antibody is generated from rabbits immunized with a KLH conjugated synthetic peptide between 840-870 amino acids from the C-terminal region of human EPS15. |
| Clone: | RB04393-04394 |
| Isotype: | Ig Fraction |
| Predicted Reactivity: | M |
| Purification: | This antibody is prepared by Saturated Ammonium Sulfate (SAS) precipitation followed by dialysis against PBS. |

Target Details

| | |
|---------|-------|
| Target: | EPS15 |
|---------|-------|

Target Details

| | |
|-------------------|--|
| Alternative Name: | EPS15 (EPS15 Products) |
| Background: | EPS15 is involved in cell growth regulation, possibly via the regulation of mitogenic signals and control of cell proliferation. EPS15 also participates in the internalization of ligand-inducible receptors of the receptor tyrosine kinase (RTK) type, in particular EGFR. Potential interaction partners include AP2A2, STN2, EPN1, and CRK via its SH3-binding sites. EPS15 is ubiquitously expressed. Phosphorylation on Tyr-849 is involved in the internalization of EGFR. EPS15 is not required for membrane translocation after EGF treatment or for targeting to coated pits, but essential for a subsequent step in EGFR endocytosis. This protein is involved in a t(1,11)(p32,q23) chromosomal translocation in acute leukemias causing fusion to the trithorax (MLL or HRX) gene product which contains DNA-binding motifs resulting in a rogue activator protein. Structurally, EPS15 contains 2 EF-hand calcium-binding domains, 3 EH domains, and 2 ubiquitin-interacting motif (UIM) repeats. |
| Molecular Weight: | 98656 |
| Gene ID: | 2060 |
| NCBI Accession: | NP_001153441 , NP_001972 |
| UniProt: | P42566 |
| Pathways: | EGFR Signaling Pathway , Regulation of Muscle Cell Differentiation , Skeletal Muscle Fiber Development , EGFR Downregulation |

Application Details

| | |
|--------------------|-----------------------|
| Application Notes: | WB: 1:1000 |
| Restrictions: | For Research Use only |

Handling

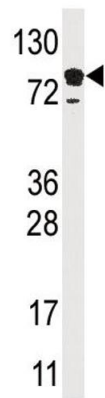
| | |
|--------------------|--|
| Format: | Liquid |
| Buffer: | Purified polyclonal antibody supplied in PBS with 0.09 % (W/V) sodium azide. |
| Preservative: | Sodium azide |
| Precaution of Use: | This product contains Sodium azide: a POISONOUS AND HAZARDOUS SUBSTANCE which should be handled by trained staff only. |
| Storage: | 4 °C,-20 °C |
| Storage Comment: | Maintain refrigerated at 2-8 °C for up to 6 months. For long term storage store at -20 °C in small |

Handling

aliquots to prevent freeze-thaw cycles.

Expiry Date: 6 months

Images



Western Blotting

Image 1. Western blot analysis of anti-EPS15 Pab (ABIN388933 and ABIN2839202) in HL60 cell line lysate (35 µg/lane). EPS15 (arrow) was detected using the purified Pab.