

Datasheet for ABIN388934  
**anti-EPS15L1 antibody (N-Term)**



[Go to Product page](#)

1 Image

## Overview

Quantity:	400 µL
Target:	EPS15L1
Binding Specificity:	AA 186-216, N-Term
Reactivity:	Human
Host:	Rabbit
Clonality:	Polyclonal
Conjugate:	This EPS15L1 antibody is un-conjugated
Application:	Western Blotting (WB)

## Product Details

Immunogen:	This EPS15R antibody is generated from rabbits immunized with a KLH conjugated synthetic peptide between 186-216 amino acids from the N-terminal region of human EPS15R.
Clone:	RB4395
Isotype:	Ig Fraction
Purification:	This antibody is prepared by Saturated Ammonium Sulfate (SAS) precipitation followed by dialysis against PBS.

## Target Details

Target:	EPS15L1
Alternative Name:	EPS15R ( <a href="#">EPS15L1 Products</a> )

## Target Details

---

**Background:** Ubiquitin is a 76 amino acid highly conserved eukaryotic polypeptide that selectively marks cellular proteins for proteolytic degradation by the 26S proteasome. The process of target selection, covalent attachment and shuttle to the 26S proteasome is a vital means of regulating the concentrations of key regulatory proteins in the cell by limiting their lifespans. Polyubiquitination is a common feature of this modification. Serial steps for modification include the activation of ubiquitin, an ATP-dependent formation of a thioester bond between ubiquitin and the enzyme E1, transfer by transacylation of ubiquitin from E1 to the ubiquitin conjugating enzyme E2, and covalent linkage to the target protein directly by E2 or via E3 ligase enzyme. Deubiquitination enzymes also exist to reverse the marking of protein substrates. Posttranslational tagging by Ub is involved in a multitude of cellular processes, including the cell cycle, cell growth and differentiation, embryogenesis, apoptosis, signal transduction, DNA repair, regulation of transcription and DNA replication, transmembrane transport, stress responses, the immune response, and nervous system functions.

---

**Molecular Weight:** 94255

---

**Gene ID:** 58513

---

**NCBI Accession:** [NP\\_001245303](#), [NP\\_001245304](#), [NP\\_001245305](#), [NP\\_067058](#)

---

**UniProt:** [Q9UBC2](#)

## Application Details

---

**Application Notes:** WB: 1:1000

---

**Restrictions:** For Research Use only

## Handling

---

**Format:** Liquid

---

**Buffer:** Purified polyclonal antibody supplied in PBS with 0.09 % (W/V) sodium azide.

---

**Preservative:** Sodium azide

---

**Precaution of Use:** This product contains Sodium azide: a POISONOUS AND HAZARDOUS SUBSTANCE which should be handled by trained staff only.

---

**Storage:** 4 °C, -20 °C

---

**Storage Comment:** Maintain refrigerated at 2-8 °C for up to 6 months. For long term storage store at -20 °C in small aliquots to prevent freeze-thaw cycles.

---

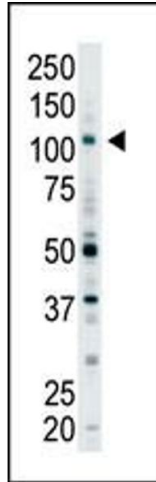
## Handling

---

Expiry Date: 6 months

## Images

---



### Western Blotting

**Image 1.** The anti-EPS15R Pab (ABIN388934 and ABIN2839203) is used in Western blot to detect EPS15R in Y79 cell lysate.