



[Go to Product page](#)

Datasheet for ABIN388977

anti-Epsin 2 antibody (N-Term)

3 Images

1 Publication

Overview

Quantity:	400 µL
Target:	Epsin 2 (EPN2)
Binding Specificity:	AA 6-36, N-Term
Reactivity:	Human, Mouse
Host:	Rabbit
Clonality:	Polyclonal
Conjugate:	This Epsin 2 antibody is un-conjugated
Application:	Western Blotting (WB), Immunohistochemistry (Paraffin-embedded Sections) (IHC (p))

Product Details

Immunogen:	This Epsin2 antibody is generated from rabbits immunized with a KLH conjugated synthetic peptide between 6-36 amino acids from the N-terminal region of human Epsin2.
Clone:	RB4610
Isotype:	Ig Fraction
Predicted Reactivity:	Rat
Purification:	This antibody is purified through a protein A column, followed by peptide affinity purification.

Target Details

Target:	Epsin 2 (EPN2)
Alternative Name:	Epsin2 (EPN2 Products)

Target Details

Background:	Epsin2 plays a role in the formation of clathrin-coated invaginations and endocytosis. It binds to EPS15 (via the NPF repeat domain), as well as to AP-2 and clathrin (via the DPW repeat domain). The protein resides in the cytoplasm, in punctate structures throughout the cell, associated with clathrin-coated vesicles, and is particularly concentrated in the region of the Golgi complex. Highest expression is found in brain, with lower levels detected in lung and liver.
Molecular Weight:	68482
Gene ID:	22905
NCBI Accession:	NP_001096134 , NP_055779 , NP_683723
UniProt:	O95208
Pathways:	EGFR Downregulation

Application Details

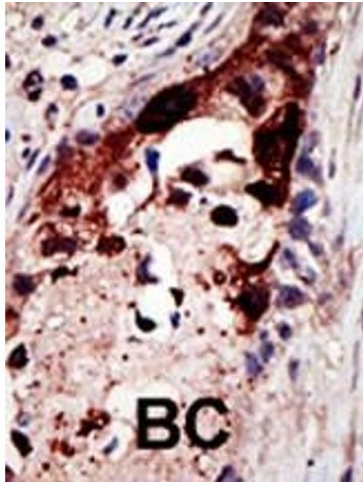
Application Notes:	WB: 1:1000. WB: 1:1000. IHC-P: 1:50~100
Restrictions:	For Research Use only

Handling

Format:	Liquid
Buffer:	Purified polyclonal antibody supplied in PBS with 0.09 % (W/V) sodium azide.
Preservative:	Sodium azide
Precaution of Use:	This product contains Sodium azide: a POISONOUS AND HAZARDOUS SUBSTANCE which should be handled by trained staff only.
Storage:	4 °C, -20 °C
Storage Comment:	Maintain refrigerated at 2-8 °C for up to 6 months. For long term storage store at -20 °C in small aliquots to prevent freeze-thaw cycles.
Expiry Date:	6 months

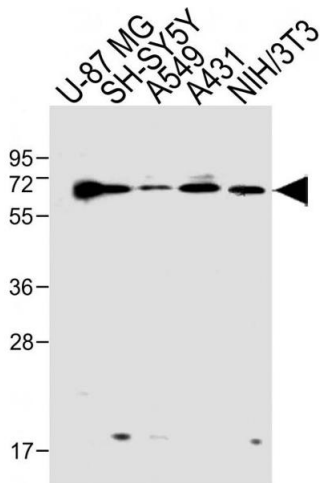
Publications

Product cited in:	Lei, Chen, Huang, Wu, Lin, Lai: "Proteomic analysis of the effect of extracellular calcium ions on human mesenchymal stem cells: Implications for bone tissue engineering." in: Chemico-biological interactions , Vol. 233, pp. 139-46, (2015) (PubMed).
-------------------	---



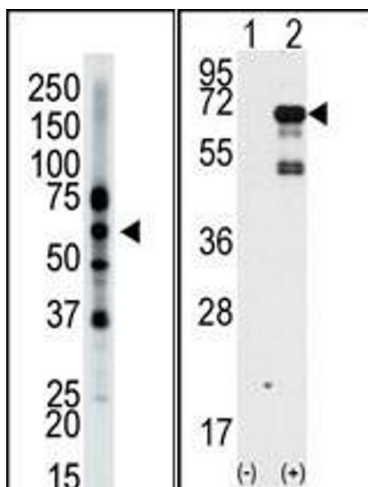
Immunohistochemistry (Paraffin-embedded Sections)

Image 1. Formalin-fixed and paraffin-embedded human cancer tissue reacted with the primary antibody, which was peroxidase-conjugated to the secondary antibody, followed by AEC staining. This data demonstrates the use of this antibody for immunohistochemistry, clinical relevance has not been evaluated. BC = breast carcinoma, HC = hepatocarcinoma.



Western Blotting

Image 2. All lanes : Anti-Epsin2/1 Antibody (N-term) at 1:1000 dilution Lane 1: U-87 MG whole cell lysate Lane 2: SH-SY5Y whole cell lysate Lane 3: A549 whole cell lysate Lane 4: A431 whole cell lysate Lane 5: NIH/3T3 whole cell lysate Lysates/proteins at 20 µg per lane. Secondary Goat Anti-Rabbit IgG, (H+L), Peroxidase conjugated at 1/10000 dilution. Predicted band size : 68 kDa Blocking/Dilution buffer: 5 % NFDM/TBST.



Western Blotting

Image 3. The anti-Epsin2 Pab (ABIN388977 and ABIN2839218) is used in Western blot to detect Epsin2 in mouse brain tissue lysate.