

Datasheet for ABIN388988
anti-LLGL1 antibody (N-Term)[Go to Product page](#)

1 Image

Overview

Quantity:	400 µL
Target:	LLGL1
Binding Specificity:	AA 172-205, N-Term
Reactivity:	Human
Host:	Rabbit
Clonality:	Polyclonal
Conjugate:	This LLGL1 antibody is un-conjugated
Application:	Western Blotting (WB)

Product Details

Immunogen:	This LLGL1 antibody is generated from rabbits immunized with a KLH conjugated synthetic peptide between 172-205 amino acids from the N-terminal region of human LLGL1.
Clone:	RB7619
Isotype:	Ig Fraction
Predicted Reactivity:	B, M, Rat
Purification:	This antibody is prepared by Saturated Ammonium Sulfate (SAS) precipitation followed by dialysis against PBS.

Target Details

Target:	LLGL1
---------	-------

Target Details

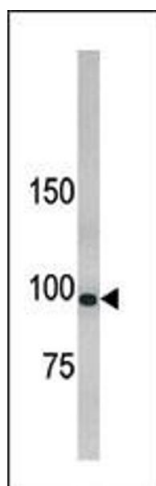
Alternative Name:	LLGL1 (LLGL1 Products)
Background:	LLGL1 is a protein that is similar to a tumor suppressor in Drosophila. The protein is part of a cytoskeletal network and is associated with nonmuscle myosin II heavy chain and a kinase that specifically phosphorylates this protein at serine residues. The gene for LLGL1 is located within the Smith-Magenis syndrome region on chromosome 17.
Molecular Weight:	115418
Gene ID:	3996
NCBI Accession:	NP_004131
UniProt:	Q15334
Pathways:	WNT Signaling

Application Details

Application Notes:	WB: 1:1000
Restrictions:	For Research Use only

Handling

Format:	Liquid
Buffer:	Purified polyclonal antibody supplied in PBS with 0.09 % (W/V) sodium azide.
Preservative:	Sodium azide
Precaution of Use:	This product contains Sodium azide: a POISONOUS AND HAZARDOUS SUBSTANCE which should be handled by trained staff only.
Storage:	4 °C,-20 °C
Storage Comment:	Maintain refrigerated at 2-8 °C for up to 6 months. For long term storage store at -20 °C in small aliquots to prevent freeze-thaw cycles.
Expiry Date:	6 months



Western Blotting

Image 1. Western blot analysis of anti-hLLGL1 Pab (ABIN388988 and ABIN2839222) in 293 cell line lysate. hLLGL1 (arrow) was detected using the purified Pab.