



[Go to Product page](#)

Datasheet for ABIN388991
anti-LLGL2 antibody (C-Term)

1 Image

Overview

Quantity:	400 µL
Target:	LLGL2
Binding Specificity:	AA 940-973, C-Term
Reactivity:	Human
Host:	Rabbit
Clonality:	Polyclonal
Conjugate:	This LLGL2 antibody is un-conjugated
Application:	Western Blotting (WB)

Product Details

Immunogen:	This LLGL2 antibody is generated from rabbits immunized with a KLH conjugated synthetic peptide between 940-973 amino acids from the C-terminal region of human LLGL2.
Clone:	RB7624
Isotype:	Ig Fraction
Purification:	This antibody is prepared by Saturated Ammonium Sulfate (SAS) precipitation followed by dialysis against PBS.

Target Details

Target:	LLGL2
Alternative Name:	LLGL2 (LLGL2 Products)

Target Details

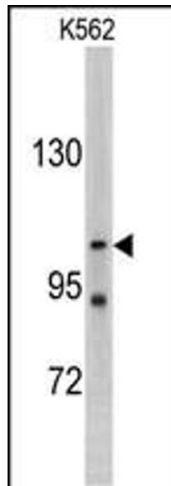
Background:	The lethal (2) giant larvae protein of Drosophila plays a role in asymmetric cell division, epithelial cell polarity, and cell migration. LLGL2 is a protein similar to lethal (2) giant larvae of Drosophila. In fly, the protein's ability to localize cell fate determinants is regulated by the atypical protein kinase C (aPKC). In human, this protein interacts with aPKC-containing complexes and is cortically localized in mitotic cells.
Molecular Weight:	113448
Gene ID:	3993
NCBI Accession:	NP_001015002 , NP_001026973 , NP_004515
UniProt:	Q6P1M3
Pathways:	WNT Signaling

Application Details

Application Notes:	WB: 1:1000
Restrictions:	For Research Use only

Handling

Format:	Liquid
Buffer:	Purified polyclonal antibody supplied in PBS with 0.09 % (W/V) sodium azide.
Preservative:	Sodium azide
Precaution of Use:	This product contains Sodium azide: a POISONOUS AND HAZARDOUS SUBSTANCE which should be handled by trained staff only.
Storage:	4 °C, -20 °C
Storage Comment:	Maintain refrigerated at 2-8 °C for up to 6 months. For long term storage store at -20 °C in small aliquots to prevent freeze-thaw cycles.
Expiry Date:	6 months



Western Blotting

Image 1. Western blot analysis of LLGL2 antibody (C-term) (ABIN388991 and ABIN2839224) in K562 cell line lysates (35 µg/lane). LLGL2 (arrow) was detected using the purified Pab.