

Datasheet for ABIN389001
anti-ARL3 antibody (C-Term)[Go to Product page](#)

3 Images

Overview

Quantity:	400 µL
Target:	ARL3
Binding Specificity:	AA 144-173, C-Term
Reactivity:	Human
Host:	Rabbit
Clonality:	Polyclonal
Conjugate:	This ARL3 antibody is un-conjugated
Application:	Western Blotting (WB), Immunohistochemistry (Paraffin-embedded Sections) (IHC (p))

Product Details

Immunogen:	This ARL3 antibody is generated from rabbits immunized with a KLH conjugated synthetic peptide between 144-173 amino acids from the C-terminal region of human ARL3.
Clone:	RB4911-4912
Isotype:	Ig Fraction
Purification:	This antibody is prepared by Saturated Ammonium Sulfate (SAS) precipitation followed by dialysis against PBS.

Target Details

Target:	ARL3
Alternative Name:	ARL3 (ARL3 Products)

Target Details

Background: ADP-ribosylation factors (ARFs) are low molecular weight GTP-binding proteins belonging to the RAS superfamily. The predicted 182-amino acid ARL3 (ADP-ribosylation like factor) protein shares 97 % amino acid identity with rat ARL3 and 43 % identity with human ARF1. Like the ARFs, ARL3 has a glycine at position 2, the site of N myristoylation, and lacks cysteine residues near the C terminus, which are found in other members of the RAS family. Northern blot analysis detected a 1-kb ARL3 transcript in all tissues tested, with highest expression in heart and lung, and lower expression in brain, liver, kidney, ovary, and testis. A 5.5-kb transcript was also detected in most tissues, with highest expression in brain. Immunoblot analysis detected ARL3 in human tumor cell lines but not in normal rodent cells. Although ARL3 binds GTP, it is devoid of activity in the cholera toxin-dependent ADP-ribosylation of Gs, and is therefore classified as an ARF-like protein.

Molecular Weight: 20456

Gene ID: 403

NCBI Accession: [NP_004302](#)

UniProt: [P36405](#)

Application Details

Application Notes: WB: 1:1000. WB: 1:1000. IHC-P: 1:50~100

Restrictions: For Research Use only

Handling

Format: Liquid

Buffer: Purified polyclonal antibody supplied in PBS with 0.09 % (W/V) sodium azide.

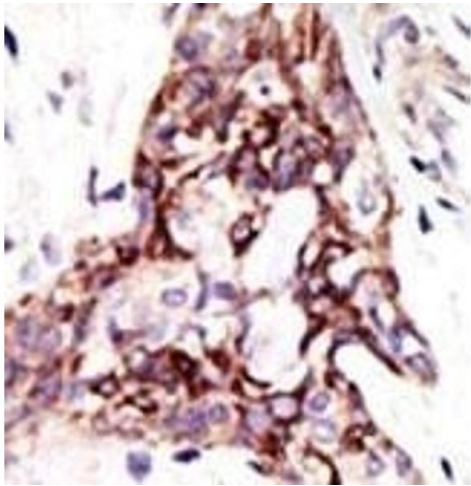
Preservative: Sodium azide

Precaution of Use: This product contains Sodium azide: a POISONOUS AND HAZARDOUS SUBSTANCE which should be handled by trained staff only.

Storage: 4 °C,-20 °C

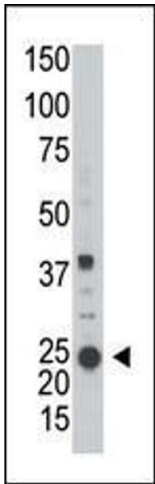
Storage Comment: Maintain refrigerated at 2-8 °C for up to 6 months. For long term storage store at -20 °C in small aliquots to prevent freeze-thaw cycles.

Expiry Date: 6 months



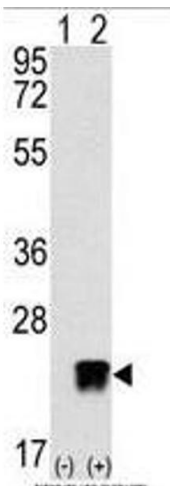
Immunohistochemistry (Paraffin-embedded Sections)

Image 1. Formalin-fixed and paraffin-embedded human cancer tissue reacted with the primary antibody, which was peroxidase-conjugated to the secondary antibody, followed by DAB staining. This data demonstrates the use of this antibody for immunohistochemistry, clinical relevance has not been evaluated. BC = breast carcinoma, HC = hepatocarcinoma.



Western Blotting

Image 2. Western blot analysis of anti-ARL3 (ABIN389001 and ABIN2839231) in cell line lysate (35 µg/lane). ARL3 (arrow) was detected using the purified Pab.



Western Blotting

Image 3. Western blot analysis of ARL3 (arrow) using rabbit polyclonal ARL3 Antibody (C-term) (ABIN389001 and ABIN2839231). 293 cell lysates (2 µg/lane) either nontransfected (Lane 1) or transiently transfected with the ARL3 gene (Lane 2) (Origene Technologies).