

Datasheet for ABIN389008
anti-ART1 antibody (N-Term)[Go to Product page](#)

1 Image

2 Publications

Overview

Quantity:	400 µL
Target:	ART1
Binding Specificity:	AA 14-43, N-Term
Reactivity:	Human, Mouse
Host:	Rabbit
Clonality:	Polyclonal
Conjugate:	This ART1 antibody is un-conjugated
Application:	Western Blotting (WB)

Product Details

Immunogen:	This ART1 antibody is generated from rabbits immunized with a KLH conjugated synthetic peptide between 14-43 amino acids from the N-terminal region of human ART1.
Clone:	RB4939
Isotype:	Ig Fraction
Purification:	This antibody is prepared by Saturated Ammonium Sulfate (SAS) precipitation followed by dialysis against PBS.

Target Details

Target:	ART1
Alternative Name:	ART1 (ART1 Products)

Target Details

Background:	ADP-ribosyltransferase catalyzes the ADP-ribosylation of arginine residues in proteins. Mono-ADP-ribosylation is a posttranslational modification of proteins that is interfered with by a variety of bacterial toxins including cholera, pertussis, and heat-labile enterotoxins of E. coli. The amino acid sequence of ART1 consists of predominantly hydrophobic N- and C-terminal regions, which is characteristic of glycosylphosphatidylinositol (GPI)-anchored proteins.
Molecular Weight:	36335
Gene ID:	417
NCBI Accession:	NP_004305
UniProt:	P52961

Application Details

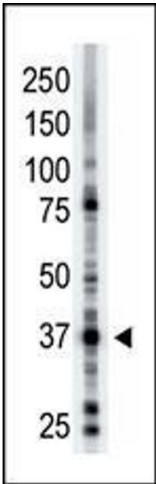
Application Notes:	WB: 1:1000
Restrictions:	For Research Use only

Handling

Format:	Liquid
Buffer:	Purified polyclonal antibody supplied in PBS with 0.09 % (W/V) sodium azide.
Preservative:	Sodium azide
Precaution of Use:	This product contains Sodium azide: a POISONOUS AND HAZARDOUS SUBSTANCE which should be handled by trained staff only.
Storage:	4 °C,-20 °C
Storage Comment:	Maintain refrigerated at 2-8 °C for up to 6 months. For long term storage store at -20 °C in small aliquots to prevent freeze-thaw cycles.
Expiry Date:	6 months

Publications

Product cited in:	Sharma, Åkerström, Sharma, Chow, Teow, Abrenica, Booth, Booth, Mirazimi, Lal: "SARS-CoV 9b protein diffuses into nucleus, undergoes active Crm1 mediated nucleocytoplasmic export and triggers apoptosis when retained in the nucleus." in: PLoS ONE , Vol. 6, Issue 5, pp. e19436, (2011) (PubMed).
-------------------	---



Western Blotting

Image 1. The anti-ART1 Pab (ABIN389008 and ABIN2839233) is used in Western blot to detect ART1 in mouse brain tissue lysate.