



Datasheet for ABIN389023  
**anti-METAP2 antibody (N-Term)**



[Go to Product page](#)

1 Image

Overview

Quantity:	400 µL
Target:	METAP2
Binding Specificity:	AA 10-40, N-Term
Reactivity:	Human
Host:	Rabbit
Clonality:	Polyclonal
Conjugate:	This METAP2 antibody is un-conjugated
Application:	Western Blotting (WB)

Product Details

Immunogen:	This METAP2 antibody is generated from rabbits immunized with a KLH conjugated synthetic peptide between 10-40 amino acids from the N-terminal region of human METAP2.
Clone:	RB5103
Isotype:	Ig Fraction
Purification:	This antibody is prepared by Saturated Ammonium Sulfate (SAS) precipitation followed by dialysis against PBS.

Target Details

Target:	METAP2
Alternative Name:	METAP2 ( <a href="#">METAP2 Products</a> )

## Target Details

---

Background:	The ADP-ribosylation factor (Arf) family are highly conserved members of the Ras superfamily of regulatory GTP-binding proteins. Arf proteins participate in routing of intracellular proteins to and within the Golgi complex. Cellular functions include maintenance of organelle integrity, coat protein assembly, as an activator of phospholipase D. The Arf family is divided functionally into the Arf and the Arf-like (Arl) proteins. The ARF proteins are categorized as class I (ARF1, ARF2, and ARF3), class II (ARF4 and ARF5) and class III (ARF6) and members of each class share a common gene organization.
Molecular Weight:	52892
Gene ID:	10988
NCBI Accession:	<a href="#">NP_006829</a>
UniProt:	<a href="#">P50579</a>
Pathways:	<a href="#">Regulation of G-Protein Coupled Receptor Protein Signaling</a>

## Application Details

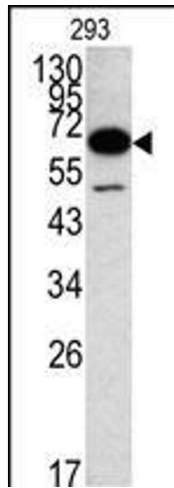
---

Application Notes:	WB: 1:1000
Restrictions:	For Research Use only

## Handling

---

Format:	Liquid
Buffer:	Purified polyclonal antibody supplied in PBS with 0.09 % (W/V) sodium azide.
Preservative:	Sodium azide
Precaution of Use:	This product contains Sodium azide: a POISONOUS AND HAZARDOUS SUBSTANCE which should be handled by trained staff only.
Storage:	4 °C, -20 °C
Storage Comment:	Maintain refrigerated at 2-8 °C for up to 6 months. For long term storage store at -20 °C in small aliquots to prevent freeze-thaw cycles.
Expiry Date:	6 months



### Western Blotting

**Image 1.** Western blot analysis of MET Antibody (N-term) 320a in 293 cell line lysates (35 µg/lane). MET (arrow) was detected using the purified Pab.