

Datasheet for ABIN389024  
**anti-METAP2 antibody (C-Term)**[Go to Product page](#)

## 2 Images

## Overview

Quantity:	400 µL
Target:	METAP2
Binding Specificity:	AA 437-467, C-Term
Reactivity:	Human
Host:	Rabbit
Clonality:	Polyclonal
Conjugate:	This METAP2 antibody is un-conjugated
Application:	Western Blotting (WB), Immunohistochemistry (Paraffin-embedded Sections) (IHC (p))

## Product Details

Immunogen:	This Methionine Aminopeptidase 2 (METAP2) antibody is generated from rabbits immunized with a KLH conjugated synthetic peptide between 437-467 amino acids from the C-terminal region of human Methionine Aminopeptidase 2 (METAP2).
Clone:	RB4959-4960
Isotype:	Ig Fraction
Predicted Reactivity:	B, M, Rat
Purification:	This antibody is prepared by Saturated Ammonium Sulfate (SAS) precipitation followed by dialysis against PBS.

## Target Details

Target:	METAP2
---------	--------

## Target Details

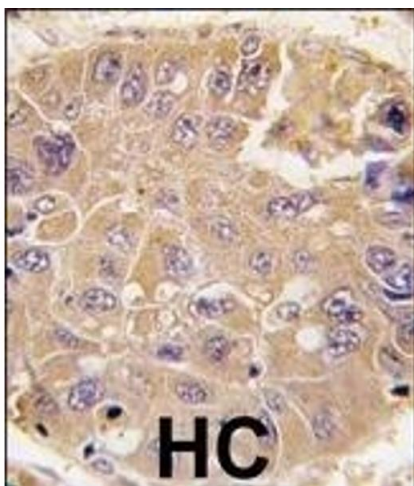
Alternative Name:	Methionine Aminopeptidase 2 (METAP2) ( <a href="#">METAP2 Products</a> )
Background:	The ADP-ribosylation factor (Arf) family are highly conserved members of the Ras superfamily of regulatory GTP-binding proteins. Arf proteins participate in routing of intracellular proteins to and within the Golgi complex. Cellular functions include maintenance of organelle integrity, coat protein assembly, as an activator of phospholipase D. The Arf family is divided functionally into the Arf and the Arf-like (Arl) proteins. The ARF proteins are categorized as class I (ARF1, ARF2, and ARF3), class II (ARF4 and ARF5) and class III (ARF6) and members of each class share a common gene organization.
Molecular Weight:	52892
Gene ID:	10988
NCBI Accession:	<a href="#">NP_006829</a>
UniProt:	<a href="#">P50579</a>
Pathways:	<a href="#">Regulation of G-Protein Coupled Receptor Protein Signaling</a>

## Application Details

Application Notes:	WB: 1:1000. IHC-P: 1:10~50
Restrictions:	For Research Use only

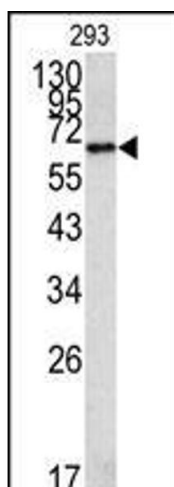
## Handling

Format:	Liquid
Buffer:	Purified polyclonal antibody supplied in PBS with 0.09 % (W/V) sodium azide.
Preservative:	Sodium azide
Precaution of Use:	This product contains Sodium azide: a POISONOUS AND HAZARDOUS SUBSTANCE which should be handled by trained staff only.
Storage:	4 °C, -20 °C
Storage Comment:	Maintain refrigerated at 2-8 °C for up to 6 months. For long term storage store at -20 °C in small aliquots to prevent freeze-thaw cycles.
Expiry Date:	6 months



#### Immunohistochemistry (Paraffin-embedded Sections)

**Image 1.** Formalin-fixed and paraffin-embedded human hepatocarcinoma tissue reacted with MET antibody (C-term), which was peroxidase-conjugated to the secondary antibody, followed by DAB staining. This data demonstrates the use of this antibody for immunohistochemistry, clinical relevance has not been evaluated.



#### Western Blotting

**Image 2.** Western blot analysis of MET Antibody (C-term) 320b in 293 cell line lysates (35 µg/lane). MET (arrow) was detected using the purified Pab.