

Datasheet for ABIN389041
anti-RPN1 antibody (C-Term)



[Go to Product page](#)

1 Image

Overview

Quantity:	400 µL
Target:	RPN1
Binding Specificity:	AA 531-561, C-Term
Reactivity:	Human, Mouse
Host:	Rabbit
Clonality:	Polyclonal
Conjugate:	This RPN1 antibody is un-conjugated
Application:	Western Blotting (WB)

Product Details

Immunogen:	This Ribophorin (RPN1) antibody is generated from rabbits immunized with a KLH conjugated synthetic peptide between 531-561 amino acids from the C-terminal region of human Ribophorin (RPN1).
Clone:	RB4832
Isotype:	Ig Fraction
Predicted Reactivity:	Pr, Rat
Purification:	This antibody is prepared by Saturated Ammonium Sulfate (SAS) precipitation followed by dialysis against PBS.

Target Details

Target:	RPN1
---------	------

Target Details

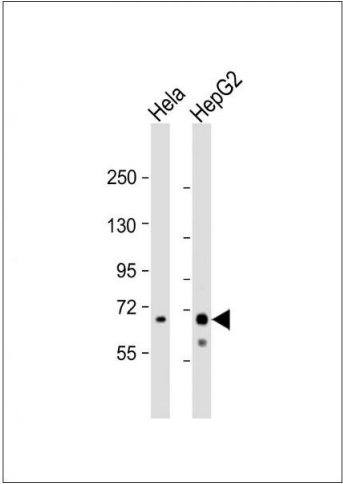
Alternative Name:	Ribophorin (RPN1) (RPN1 Products)
Background:	Ribophorins 1 and 2 are abundant and highly conserved glycoproteins residing in the endoplasmic reticulum, that participate in ribosome binding. Mammalian oligosaccharyltransferase activity is associated with a protein complex composed of RPN1, RPN2, and an oligosaccharyltransferase protein. RPN1 is a component of the proteasome base. The ubiquitin-like (UBL) domain of recombinant Rad23 interacts with proteasomes through the leucine-rich repeat domain of RPN1. The RPN1 gene maps to chromosome 3 in somatic cell hybrids, and the RPN2 gene maps to chromosome 20 by in situ hybridization.
Molecular Weight:	68569
Gene ID:	6184
NCBI Accession:	NP_002941
UniProt:	P04843

Application Details

Application Notes:	WB: 1:1000. WB: 1:1000
Restrictions:	For Research Use only

Handling

Format:	Liquid
Buffer:	Purified polyclonal antibody supplied in PBS with 0.09 % (W/V) sodium azide.
Preservative:	Sodium azide
Precaution of Use:	This product contains Sodium azide: a POISONOUS AND HAZARDOUS SUBSTANCE which should be handled by trained staff only.
Storage:	4 °C,-20 °C
Storage Comment:	Maintain refrigerated at 2-8 °C for up to 6 months. For long term storage store at -20 °C in small aliquots to prevent freeze-thaw cycles.
Expiry Date:	6 months



Western Blotting

Image 1. The anti-RPN1 Pab (ABIN389041 and ABIN2839253) is used in Western blot to detect RPN1 in HeLa cell lysate (Lane 1) and mouse liver tissue lysate (Lane 2).