

Datasheet for ABIN389048

anti-ZMPSTE24 antibody (AA 400-430)**2** Images**3** Publications[Go to Product page](#)

Overview

Quantity:	400 µL
Target:	ZMPSTE24 (Zmpste24)
Binding Specificity:	AA 400-430
Reactivity:	Human
Host:	Rabbit
Clonality:	Polyclonal
Conjugate:	This ZMPSTE24 antibody is un-conjugated
Application:	Western Blotting (WB), Immunohistochemistry (Paraffin-embedded Sections) (IHC (p))

Product Details

Immunogen:	This ZMPSTE24 antibody is generated from rabbits immunized with a KLH conjugated synthetic peptide between 400-430 amino acids from the Central region of human ZMPSTE24.
Clone:	RB04772
Isotype:	Ig Fraction
Predicted Reactivity:	M
Purification:	This antibody is prepared by Saturated Ammonium Sulfate (SAS) precipitation followed by dialysis against PBS.

Target Details

Target:	ZMPSTE24 (Zmpste24)
---------	---------------------

Target Details

Alternative Name:	ZMPSTE24 (Zmpste24 Products)
Background:	ZMPSTE24 is a zinc metalloprotease similar to yeast Ste24p. It is an integral membrane protein belonging to peptidase family M48 and is found in the endoplasmic reticulum and possibly in the Golgi compartment. It is thought to be involved in the proteolytic processing of farnesylated proteins.
Molecular Weight:	54813
Gene ID:	10269
NCBI Accession:	NP_005848
UniProt:	O75844

Application Details

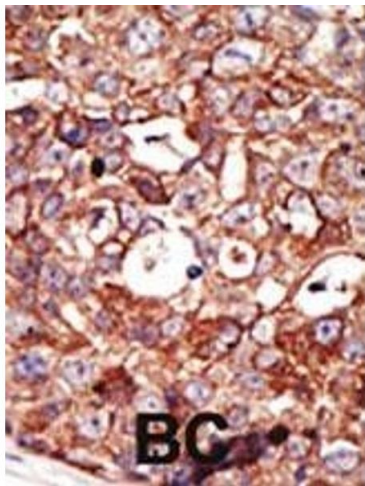
Application Notes:	WB: 1:1000. IHC-P: 1:50~100
Restrictions:	For Research Use only

Handling

Format:	Liquid
Buffer:	Purified polyclonal antibody supplied in PBS with 0.09 % (W/V) sodium azide.
Preservative:	Sodium azide
Precaution of Use:	This product contains Sodium azide: a POISONOUS AND HAZARDOUS SUBSTANCE which should be handled by trained staff only.
Storage:	4 °C,-20 °C
Storage Comment:	Maintain refrigerated at 2-8 °C for up to 6 months. For long term storage store at -20 °C in small aliquots to prevent freeze-thaw cycles.
Expiry Date:	6 months

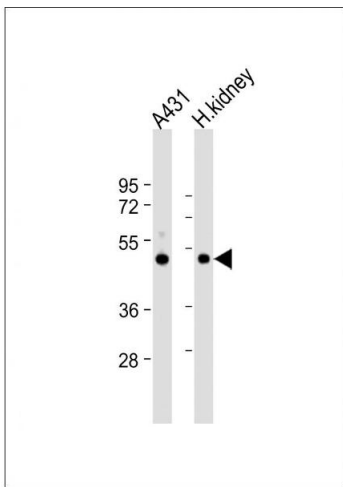
Publications

Product cited in:	Lei, Chen, Huang, Wu, Lin, Lai: "Proteomic analysis of the effect of extracellular calcium ions on human mesenchymal stem cells: Implications for bone tissue engineering." in: Chemico-biological interactions , Vol. 233, pp. 139-46, (2015) (PubMed).
-------------------	---



Immunohistochemistry (Paraffin-embedded Sections)

Image 1. Formalin-fixed and paraffin-embedded human cancer tissue reacted with the primary antibody, which was peroxidase-conjugated to the secondary antibody, followed by DAB staining. This data demonstrates the use of this antibody for immunohistochemistry, clinical relevance has not been evaluated. BC = breast carcinoma, HC = hepatocarcinoma.



Western Blotting

Image 2. All lanes : Anti-ZSTE24 Antibody at 1:1000 dilution
Lane 1: A431 whole cell lysate Lane 2: human kidney lysate
Lysates/proteins at 20 µg per lane. Secondary Goat Anti-Rabbit IgG, (H+L), Peroxidase conjugated at 1/10000 dilution. Predicted band size : 55 kDa Blocking/Dilution buffer: 5 % NFDM/TBST.