

Datasheet for ABIN389050

**anti-RCE1/FACE2 antibody (N-Term)****3** Images[Go to Product page](#)

## Overview

Quantity:	400 µL
Target:	RCE1/FACE2 (RCE1)
Binding Specificity:	AA 41-71, N-Term
Reactivity:	Human
Host:	Rabbit
Clonality:	Polyclonal
Conjugate:	This RCE1/FACE2 antibody is un-conjugated
Application:	Western Blotting (WB), Immunohistochemistry (Paraffin-embedded Sections) (IHC (p)), Flow Cytometry (FACS)

## Product Details

Immunogen:	This RCE1 antibody is generated from rabbits immunized with a KLH conjugated synthetic peptide between 41-71 amino acids from the N-terminal region of human RCE1.
Clone:	RB4777
Isotype:	Ig Fraction
Predicted Reactivity:	B, M, Rat
Purification:	This antibody is purified through a protein A column, followed by peptide affinity purification.

## Target Details

Target:	RCE1/FACE2 (RCE1)
---------	-------------------

## Target Details

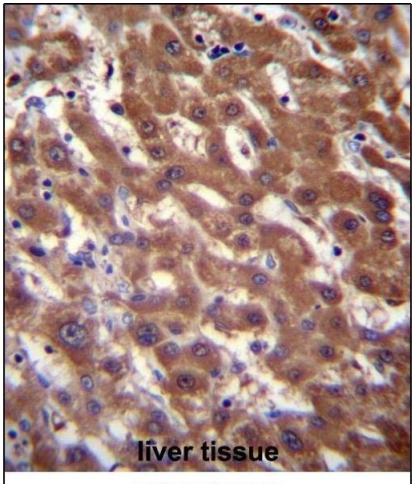
Alternative Name:	RCE1 ( <a href="#">RCE1 Products</a> )
Background:	RCE1 is an integral membrane protein which is classified as a member of the metalloproteinase family. This enzyme is thought to function in the maintenance and processing of CAAX-type prenylated proteins.
Molecular Weight:	35833
Gene ID:	9986
NCBI Accession:	<a href="#">NP_001027450</a> , <a href="#">NP_005124</a>
UniProt:	<a href="#">Q9Y256</a>

## Application Details

Application Notes:	WB: 1:1000. IHC-P: 1:10~50. FC: 1:10~50
Restrictions:	For Research Use only

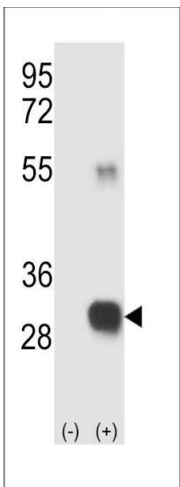
## Handling

Format:	Liquid
Buffer:	Purified polyclonal antibody supplied in PBS with 0.09 % (W/V) sodium azide.
Preservative:	Sodium azide
Precaution of Use:	This product contains Sodium azide: a POISONOUS AND HAZARDOUS SUBSTANCE which should be handled by trained staff only.
Storage:	4 °C,-20 °C
Storage Comment:	Maintain refrigerated at 2-8 °C for up to 6 months. For long term storage store at -20 °C in small aliquots to prevent freeze-thaw cycles.
Expiry Date:	6 months



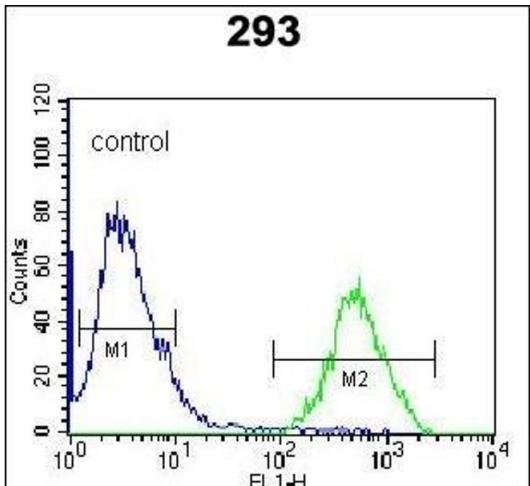
#### Immunohistochemistry (Paraffin-embedded Sections)

**Image 1.** RCE1 Antibody (N-term W57) (ABIN389050 and ABIN2839259) immunohistochemistry analysis in formalin fixed and paraffin embedded human liver tissue followed by peroxidase conjugation of the secondary antibody and DAB staining. This data demonstrates the use of RCE1 Antibody (N-term W57) for immunohistochemistry. Clinical relevance has not been evaluated.



#### Western Blotting

**Image 2.** Western blot analysis of RCE1 (arrow) using rabbit polyclonal RCE1 Antibody (W57) (ABIN389050 and ABIN2839259). 293 cell lysates (2 µg/lane) either nontransfected (Lane 1) or transiently transfected (Lane 2) with the RCE1 gene.



#### Flow Cytometry

**Image 3.** RCE1 Antibody (N-term W57) (ABIN389050 and ABIN2839259) flow cytometric analysis of 293 cells (right histogram) compared to a negative control cell (left histogram). FITC-conjugated goat-anti-rabbit secondary antibodies were used for the analysis.