

Datasheet for ABIN389063
anti-GPLD1 antibody (C-Term)

2 Images

[Go to Product page](#)

Overview

Quantity:	400 µL
Target:	GPLD1
Binding Specificity:	AA 679-709, C-Term
Reactivity:	Human
Host:	Rabbit
Clonality:	Polyclonal
Conjugate:	This GPLD1 antibody is un-conjugated
Application:	Western Blotting (WB), Immunohistochemistry (Paraffin-embedded Sections) (IHC (p))

Product Details

Immunogen:	This GPLD1 antibody is generated from rabbits immunized with a KLH conjugated synthetic peptide between 679-709 amino acids from the C-terminal region of human GPLD1.
Clone:	RB04854
Isotype:	Ig Fraction
Purification:	This antibody is prepared by Saturated Ammonium Sulfate (SAS) precipitation followed by dialysis against PBS.

Target Details

Target:	GPLD1
Alternative Name:	GPLD1 (GPLD1 Products)

Target Details

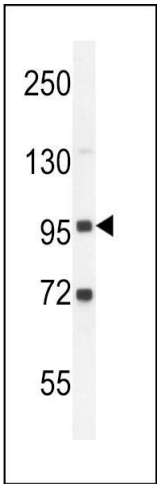
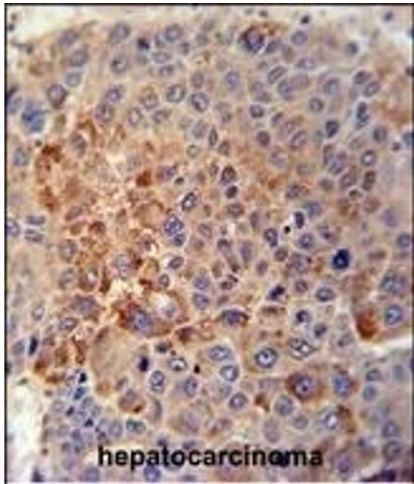
Background:	GPLD1 is expressed in numerous tissues and cells and specifically cleaves GPI-anchored proteins. Liver has the highest level of GPI-PLD expression and is the primary organ contributing to GPLD1 in the serum. GPLD1 is abundant in serum in which it associates with polipoproteins AI and AIV. Increased serum GPLD1 is associated with insulin resistance and elevated serum triglycerides. Many surface proteins are attached to eukaryotic cell membranes via glycosylphosphatidylinositol (GPI) anchors that are covalently bound to the C-terminus of the protein and cleavage of the GPI moiety by GPLD1, only enzyme known that cleavage GPI anchor, may represent a means of regulating attachment of these proteins to the cell surface, or alternatively, their release into the extracellular environment.
Molecular Weight:	92336
Gene ID:	2822
NCBI Accession:	NP_001494
UniProt:	P80108
Pathways:	Inositol Metabolic Process , Regulation of Carbohydrate Metabolic Process

Application Details

Application Notes:	WB: 1:1000. IHC-P: 1:50~100
Restrictions:	For Research Use only

Handling

Format:	Liquid
Buffer:	Purified polyclonal antibody supplied in PBS with 0.09 % (W/V) sodium azide.
Preservative:	Sodium azide
Precaution of Use:	This product contains Sodium azide: a POISONOUS AND HAZARDOUS SUBSTANCE which should be handled by trained staff only.
Storage:	4 °C,-20 °C
Storage Comment:	Maintain refrigerated at 2-8 °C for up to 6 months. For long term storage store at -20 °C in small aliquots to prevent freeze-thaw cycles.
Expiry Date:	6 months



Immunohistochemistry (Paraffin-embedded Sections)

Image 1. GPLD1 Antibody (C-term) (ABIN389063 and ABIN2839268) immunohistochemistry analysis in formalin fixed and paraffin embedded human hepatocarcinoma tissue followed by peroxidase conjugation of the secondary antibody and DAB staining. This data demonstrates the use of the GPLD1 Antibody (C-term) for immunohistochemistry. Clinical relevance has not been evaluated.

Western Blotting

Image 2. GPLD2- (ABIN389063 and ABIN2839268) western blot analysis in K562 cell line lysates (35 µg/lane). This demonstrates the GPLD2 antibody detected the GPLD2 protein (arrow).