



[Go to Product page](#)

Datasheet for ABIN389064

anti-PIGK antibody (N-Term)

2 Images

1 Publication

Overview

Quantity:	400 µL
Target:	PIGK (GPI8)
Binding Specificity:	AA 37-68, N-Term
Reactivity:	Human
Host:	Rabbit
Clonality:	Polyclonal
Conjugate:	This PIGK antibody is un-conjugated
Application:	Western Blotting (WB), Immunohistochemistry (Paraffin-embedded Sections) (IHC (p))

Product Details

Immunogen:	This GPI8 antibody is generated from rabbits immunized with a KLH conjugated synthetic peptide between 37-68 amino acids from the N-terminal region of human GPI8.
Clone:	RB4714
Isotype:	Ig Fraction
Predicted Reactivity:	B, M, Pig
Purification:	This antibody is prepared by Saturated Ammonium Sulfate (SAS) precipitation followed by dialysis against PBS.

Target Details

Target:	PIGK (GPI8)
---------	-------------

Target Details

Alternative Name:	GPI8 (GPI8 Products)
Background:	GPI8 is a member of the cysteine protease family C13 that is involved in glycosylphosphatidylinositol (GPI)-anchor biosynthesis. The GPI-anchor is a glycolipid found on many blood cells and serves to anchor proteins to the cell surface. This protein is a member of the multisubunit enzyme, GPI transamidase and is thought to be its enzymatic component. GPI transamidase mediates GPI anchoring in the endoplasmic reticulum, by catalyzing the transfer of fully assembled GPI units to proteins.
Molecular Weight:	45252
Gene ID:	10026
NCBI Accession:	NP_005473
UniProt:	Q92643

Application Details

Application Notes:	WB: 1:1000. IHC-P: 1:50~100
Restrictions:	For Research Use only

Handling

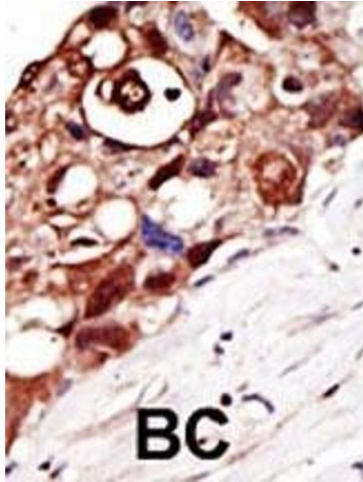
Format:	Liquid
Buffer:	Purified polyclonal antibody supplied in PBS with 0.09 % (W/V) sodium azide.
Preservative:	Sodium azide
Precaution of Use:	This product contains Sodium azide: a POISONOUS AND HAZARDOUS SUBSTANCE which should be handled by trained staff only.
Storage:	4 °C,-20 °C
Storage Comment:	Maintain refrigerated at 2-8 °C for up to 6 months. For long term storage store at -20 °C in small aliquots to prevent freeze-thaw cycles.
Expiry Date:	6 months

Publications

Product cited in:	Sharma, Åkerström, Sharma, Chow, Teow, Abrenica, Booth, Booth, Mirazimi, Lal: "SARS-CoV 9b protein diffuses into nucleus, undergoes active Crm1 mediated nucleocytoplasmic export and
-------------------	---

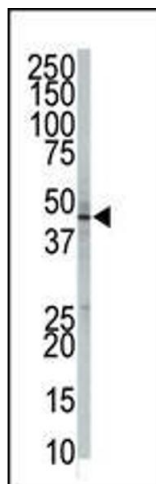
triggers apoptosis when retained in the nucleus." in: **PLoS ONE**, Vol. 6, Issue 5, pp. e19436, (2011) ([PubMed](#)).

Images



Immunohistochemistry (Paraffin-embedded Sections)

Image 1. Formalin-fixed and paraffin-embedded human cancer tissue reacted with the primary antibody, which was peroxidase-conjugated to the secondary antibody, followed by DAB staining. This data demonstrates the use of this antibody for immunohistochemistry, clinical relevance has not been evaluated. BC = breast carcinoma, HC = hepatocarcinoma.



Western Blotting

Image 2. The anti-GPI8 Pab (ABIN389064 and ABIN2839269) is used in Western blot to detect GPI8 in 293 cell lysate.