

Datasheet for ABIN389067

anti-Caprin-1 antibody (C-Term)**2** Images[Go to Product page](#)

Overview

Quantity:	400 µL
Target:	Caprin-1
Binding Specificity:	AA 615-649, C-Term
Reactivity:	Human
Host:	Rabbit
Clonality:	Polyclonal
Conjugate:	This Caprin-1 antibody is un-conjugated
Application:	Western Blotting (WB), Immunohistochemistry (Paraffin-embedded Sections) (IHC (p))

Product Details

Immunogen:	This GPIP137 antibody is generated from rabbits immunized with a KLH conjugated synthetic peptide between 615-649 amino acids from the C-terminal region of human GPIP137.
Clone:	RB4719
Isotype:	Ig Fraction
Purification:	This antibody is prepared by Saturated Ammonium Sulfate (SAS) precipitation followed by dialysis against PBS.

Target Details

Target:	Caprin-1
Alternative Name:	GPIP137 (Caprin-1 Products)

Target Details

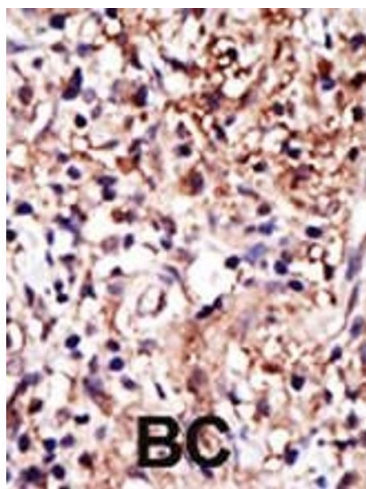
Background:	GPIP137 may regulate the transport and translation of mRNAs of proteins involved in synaptic plasticity in neurons and cell proliferation and migration in multiple cell types. It is expressed in the cytoplasm.
Molecular Weight:	78366
NCBI Accession:	NP_005889 , NP_976240
UniProt:	Q14444

Application Details

Application Notes:	WB: 1:1000. IHC-P: 1:50~100
Restrictions:	For Research Use only

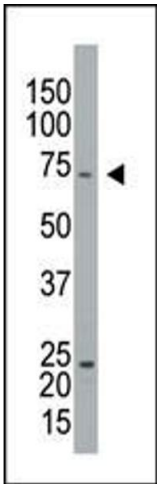
Handling

Format:	Liquid
Buffer:	Purified polyclonal antibody supplied in PBS with 0.09 % (W/V) sodium azide.
Preservative:	Sodium azide
Precaution of Use:	This product contains Sodium azide: a POISONOUS AND HAZARDOUS SUBSTANCE which should be handled by trained staff only.
Storage:	4 °C,-20 °C
Storage Comment:	Maintain refrigerated at 2-8 °C for up to 6 months. For long term storage store at -20 °C.
Expiry Date:	6 months



Immunohistochemistry (Paraffin-embedded Sections)

Image 1. Formalin-fixed and paraffin-embedded human cancer tissue reacted with the primary antibody, which was peroxidase-conjugated to the secondary antibody, followed by DAB staining. This data demonstrates the use of this antibody for immunohistochemistry, clinical relevance has not been evaluated. BC = breast carcinoma, HC = hepatocarcinoma.



Western Blotting

Image 2. The anti-GPI Pab (ABIN389067 and ABIN2839271) is used in Western blot to detect GPI in HL-60 cell lysate.