



Datasheet for ABIN389079
anti-NUB1 antibody (C-Term)



[Go to Product page](#)

3 Images

Overview

Quantity:	400 µL
Target:	NUB1
Binding Specificity:	AA 513-542, C-Term
Reactivity:	Human
Host:	Rabbit
Clonality:	Polyclonal
Conjugate:	This NUB1 antibody is un-conjugated
Application:	Western Blotting (WB), Immunohistochemistry (Paraffin-embedded Sections) (IHC (p))

Product Details

Immunogen:	This NYREN18 antibody is generated from rabbits immunized with a KLH conjugated synthetic peptide between 513-542 amino acids from the C-terminal region of human NYREN18.
Clone:	RB2875
Isotype:	Ig Fraction
Purification:	This antibody is prepared by Saturated Ammonium Sulfate (SAS) precipitation followed by dialysis against PBS.

Target Details

Target:	NUB1
Alternative Name:	NYREN18 (NUB1 Products)

Target Details

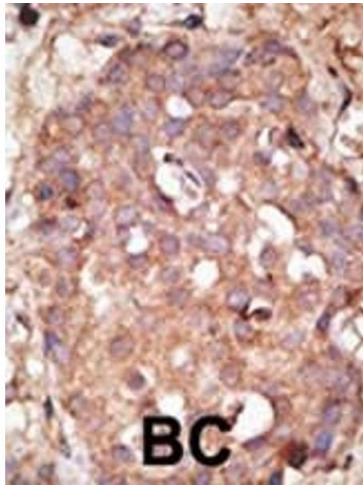
Background:	NYREN18 is a specific down-regulator of the NEDD8 conjugation system. It recruits NEDD8 and its conjugates to the proteasome for degradation. It also interacts with PSMD4/S5a, a member of the regulatory subunit of the 26S proteasome.
Molecular Weight:	70538
Gene ID:	51667
NCBI Accession:	NP_001230280 , NP_057202
UniProt:	Q9Y5A7

Application Details

Application Notes:	WB: 1:1000. WB: 1:1000. IHC-P: 1:50~100
Restrictions:	For Research Use only

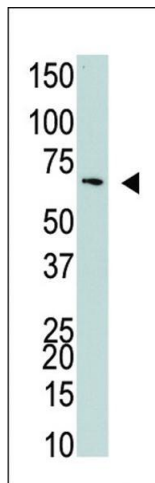
Handling

Format:	Liquid
Buffer:	Purified polyclonal antibody supplied in PBS with 0.09 % (W/V) sodium azide.
Preservative:	Sodium azide
Precaution of Use:	This product contains Sodium azide: a POISONOUS AND HAZARDOUS SUBSTANCE which should be handled by trained staff only.
Storage:	4 °C, -20 °C
Storage Comment:	Maintain refrigerated at 2-8 °C for up to 6 months. For long term storage store at -20 °C in small aliquots to prevent freeze-thaw cycles.
Expiry Date:	6 months



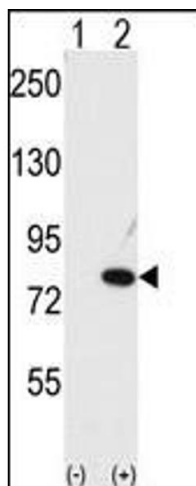
Immunohistochemistry (Paraffin-embedded Sections)

Image 1. Formalin-fixed and paraffin-embedded human cancer tissue reacted with the primary antibody, which was peroxidase-conjugated to the secondary antibody, followed by DAB staining. This data demonstrates the use of this antibody for immunohistochemistry, clinical relevance has not been evaluated. BC = breast carcinoma, HC = hepatocarcinoma.



Western Blotting

Image 2. The anti-NYREN18 Pab (ABIN389079 and ABIN2839277) is used in Western blot to detect NYREN18 in 293 cell lysate.



Western Blotting

Image 3. Western blot analysis of NUB1 (arrow) using NYREN18 Antibody (C-term) (ABIN389079 and ABIN2839277). 293 cell lysates (2 µg/lane) either nontransfected (Lane 1) or transiently transfected with the NUB1 gene (Lane 2) (Origene Technologies).