



[Go to Product page](#)

Datasheet for ABIN389082
anti-EZH1 antibody (AA 393-422)

3 Images

Overview

Quantity:	400 µL
Target:	EZH1
Binding Specificity:	AA 393-422
Reactivity:	Human
Host:	Rabbit
Clonality:	Polyclonal
Conjugate:	This EZH1 antibody is un-conjugated
Application:	Western Blotting (WB), Immunohistochemistry (Paraffin-embedded Sections) (IHC (p))

Product Details

Immunogen:	This EZH1 antibody is generated from rabbits immunized with a KLH conjugated synthetic peptide between 393-422 amino acids from the Central region of human EZH1.
Clone:	RB2919-2920
Isotype:	Ig Fraction
Predicted Reactivity:	B
Purification:	This antibody is prepared by Saturated Ammonium Sulfate (SAS) precipitation followed by dialysis against PBS.

Target Details

Target:	EZH1
---------	------

Target Details

Alternative Name: EZH1 ([EZH1 Products](#))

Background: EZH1 encodes a protein of 747 amino acids that displays 55 % amino acid identity overall with the Drosophila homolog.¹ The strong sequence conservation suggested potential roles for EZH1 in human development as a transcriptional regulator and as a component of protein complexes that preserve heterochromatin stability. EZH1 is expressed as 2 major transcripts in all adult and fetal human tissues evaluated.. Analysis of an EZH1 cDNA revealed an unusual splicing event involving EZH1 and a tandemly linked gene GPR2 and suggested a potential mechanism for modifying the EZH1 protein in the conserved C-terminal domain. The GPR2 gene maps to 17q21.1-q21.3 in the vicinity of the BRCA1 gene.

Molecular Weight: 85271

Gene ID: 2145

NCBI Accession: [NP_001982](#)

UniProt: [Q92800](#)

Application Details

Application Notes: WB: 1:1000. IHC-P: 1:50~100. IHC-P: 1:50~100

Restrictions: For Research Use only

Handling

Format: Liquid

Buffer: Purified polyclonal antibody supplied in PBS with 0.09 % (W/V) sodium azide.

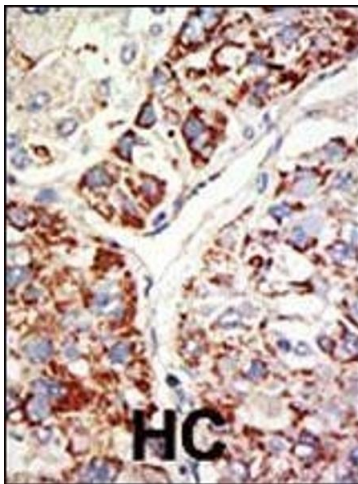
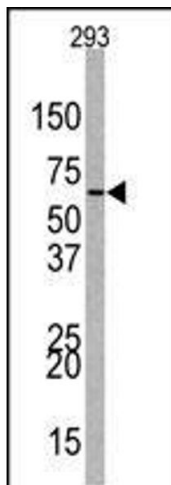
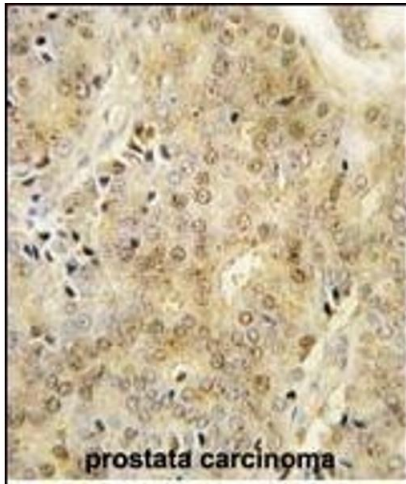
Preservative: Sodium azide

Precaution of Use: This product contains Sodium azide: a POISONOUS AND HAZARDOUS SUBSTANCE which should be handled by trained staff only.

Storage: 4 °C, -20 °C

Storage Comment: Maintain refrigerated at 2-8 °C for up to 6 months. For long term storage store at -20 °C in small aliquots to prevent freeze-thaw cycles.

Expiry Date: 6 months



Immunohistochemistry (Paraffin-embedded Sections)

Image 1. Formalin-fixed and paraffin-embedded human prostata carcinoma tissue reacted with EZH1 Antibody (Center) (ABIN389082 and ABIN2839279) , which was peroxidase-conjugated to the secondary antibody, followed by DAB staining. This data demonstrates the use of this antibody for immunohistochemistry, clinical relevance has not been evaluated.

Western Blotting

Image 2. Western blot analysis of anti-EZH1 Antibody (Center) (ABIN389082 and ABIN2839279) in 293 cell line lysates (35 µg/lane). EZH1(arrow) was detected using the purified Pab.

Immunohistochemistry (Paraffin-embedded Sections)

Image 3. Formalin-fixed and paraffin-embedded human cancer tissue reacted with the primary antibody, which was peroxidase-conjugated to the secondary antibody, followed by DAB staining. This data demonstrates the use of this antibody for immunohistochemistry, clinical relevance has not been evaluated. BC = breast carcinoma, HC = hepatocarcinoma.