

Datasheet for ABIN389089
anti-CBX8 antibody (C-Term)

3 Images

[Go to Product page](#)

Overview

Quantity:	400 µL
Target:	CBX8
Binding Specificity:	AA 306-337, C-Term
Reactivity:	Human, Mouse
Host:	Rabbit
Clonality:	Polyclonal
Conjugate:	This CBX8 antibody is un-conjugated
Application:	Western Blotting (WB), Immunohistochemistry (Paraffin-embedded Sections) (IHC (p))

Product Details

Immunogen:	This CBX8 antibody is generated from rabbits immunized with a KLH conjugated synthetic peptide between 306-337 amino acids from the C-terminal region of human CBX8.
Clone:	RB2937
Isotype:	Ig Fraction
Purification:	This antibody is purified through a protein A column, followed by peptide affinity purification.

Target Details

Target:	CBX8
Alternative Name:	CBX8 (CBX8 Products)
Background:	Chromobox homolog 8 (CBX8 or Pc3) is a member of Drosophila Polycomb group gene family.

Target Details

The polycomb group (PcG) genes are essential for maintenance of appropriate expression patterns of developmental master regulators and thus are essential for proper development. Changes in expression of PcG proteins have been associated with cancer. CBX8 is involved in maintaining the transcriptionally repressive state of genes. It modifies chromatin, rendering it heritably changed in its expressibility. Structurally, CBX4 contains 1 chromo domain, which is 40 to 50 amino acids long.

Molecular Weight: 43396

Gene ID: 57332

NCBI Accession: [NP_065700](#)

UniProt: [Q9HC52](#)

Application Details

Application Notes: WB: 1:1000. WB: 1:1000. IHC-P: 1:50~100

Restrictions: For Research Use only

Handling

Format: Liquid

Buffer: Purified polyclonal antibody supplied in PBS with 0.09 % (W/V) sodium azide.

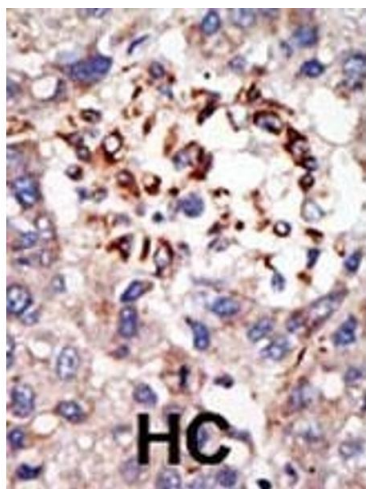
Preservative: Sodium azide

Precaution of Use: This product contains Sodium azide: a POISONOUS AND HAZARDOUS SUBSTANCE which should be handled by trained staff only.

Storage: 4 °C, -20 °C

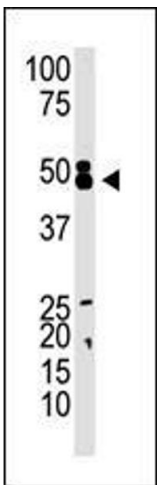
Storage Comment: Maintain refrigerated at 2-8 °C for up to 6 months. For long term storage store at -20 °C in small aliquots to prevent freeze-thaw cycles.

Expiry Date: 6 months



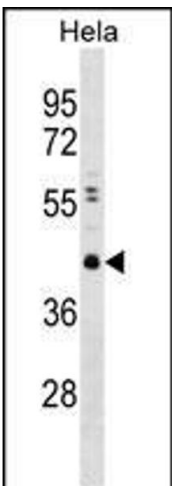
Immunohistochemistry (Paraffin-embedded Sections)

Image 1. Formalin-fixed and paraffin-embedded human cancer tissue reacted with the primary antibody, which was peroxidase-conjugated to the secondary antibody, followed by DAB staining. This data demonstrates the use of this antibody for immunohistochemistry, clinical relevance has not been evaluated. BC = breast carcinoma, HC = hepatocarcinoma.



Western Blotting

Image 2. The anti-CBX8 C-term Pab (ABIN389089 and ABIN2839284) is used in Western blot to detect CBX8 in mouse kidney tissue lysate.



Western Blotting

Image 3. CBX8 Antibody (ABIN389089 and ABIN2839284) western blot analysis in HeLa cell line lysates (35 μ g/lane). This demonstrates the CBX8 antibody detected the CBX8 protein (arrow).