

Datasheet for ABIN389101  
**anti-CPT1A antibody (C-Term)**[Go to Product page](#)

## 2 Images

## Overview

Quantity:	400 µL
Target:	CPT1A
Binding Specificity:	AA 606-636, C-Term
Reactivity:	Human, Cow
Host:	Rabbit
Clonality:	Polyclonal
Conjugate:	This CPT1A antibody is un-conjugated
Application:	Western Blotting (WB), Immunohistochemistry (Paraffin-embedded Sections) (IHC (p))

## Product Details

Immunogen:	This CPT1A antibody is generated from rabbits immunized with a KLH conjugated synthetic peptide between 606-636 amino acids from the C-terminal region of human CPT1A.
Clone:	RB4655
Isotype:	Ig Fraction
Purification:	This antibody is prepared by Saturated Ammonium Sulfate (SAS) precipitation followed by dialysis against PBS.

## Target Details

Target:	CPT1A
Alternative Name:	CPT1A ( <a href="#">CPT1A Products</a> )

## Target Details

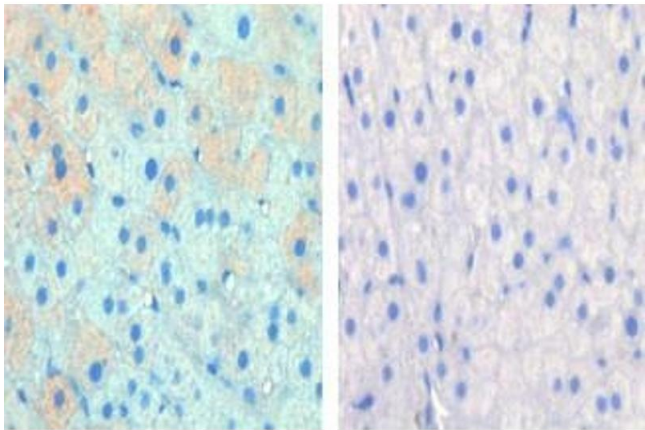
Background:	The mitochondrial oxidation of long-chain fatty acids is initiated by the sequential action of carnitine palmitoyltransferase I (which is located in the outer membrane and is detergent-labile) and carnitine palmitoyltransferase II (which is located in the inner membrane and is detergent-stable), together with a carnitine-acylcarnitine translocase. CPT I is the key enzyme in the carnitine-dependent transport across the mitochondrial inner membrane and its deficiency results in a decreased rate of fatty acid beta-oxidation.
Molecular Weight:	88368
Gene ID:	1374
NCBI Accession:	<a href="#">NP_001027017</a> , <a href="#">NP_001867</a>
UniProt:	<a href="#">P50416</a>
Pathways:	<a href="#">AMPK Signaling</a> , <a href="#">Regulation of Lipid Metabolism by PPARalpha</a> , <a href="#">Feeding Behaviour</a> , <a href="#">Monocarboxylic Acid Catabolic Process</a>

## Application Details

Application Notes:	WB: 1:1000. IHC-P: 1:50~100
Restrictions:	For Research Use only

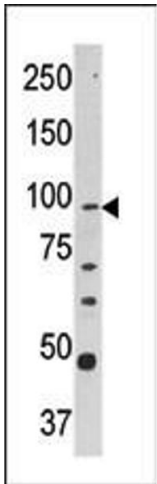
## Handling

Format:	Liquid
Buffer:	Purified polyclonal antibody supplied in PBS with 0.09 % (W/V) sodium azide.
Preservative:	Sodium azide
Precaution of Use:	This product contains Sodium azide: a POISONOUS AND HAZARDOUS SUBSTANCE which should be handled by trained staff only.
Storage:	4 °C,-20 °C
Storage Comment:	Maintain refrigerated at 2-8 °C for up to 6 months. For long term storage store at -20 °C in small aliquots to prevent freeze-thaw cycles.
Expiry Date:	6 months



**Immunohistochemistry (Paraffin-embedded Sections)**

**Image 1.** Left image is paraformaldehyde-fixed and paraffin-embedded cow lactating with CPT1A Pab (ABIN389101 and ABIN2839291) , which was peroxidase-conjugated to the secondary antibody, followed by AEC staining, right image is contrast, did not add the antibody. This data was kindly offered by Hideaki Hayashi, University of Bern, Switzerland.



**Western Blotting**

**Image 2.** Western blot analysis of anti-CPT1A Pab (ABIN389101 and ABIN2839291) in Y79 cell line lysate (35 μg/lane). CPT1A(arrow) was detected using the purified Pab.