



[Go to Product page](#)

Datasheet for ABIN389105
anti-CPT2 antibody (C-Term)

2 Images

Overview

Quantity:	400 µL
Target:	CPT2
Binding Specificity:	AA 431-462, C-Term
Reactivity:	Human, Mouse
Host:	Rabbit
Clonality:	Polyclonal
Conjugate:	This CPT2 antibody is un-conjugated
Application:	Western Blotting (WB), Immunofluorescence (IF)

Product Details

Immunogen:	This CPT2 antibody is generated from rabbits immunized with a KLH conjugated synthetic peptide between 431-462 amino acids from the C-terminal region of human CPT2.
Clone:	RB04659-04660
Isotype:	Ig Fraction
Purification:	This antibody is prepared by Saturated Ammonium Sulfate (SAS) precipitation followed by dialysis against PBS.

Target Details

Target:	CPT2
Alternative Name:	CPT2 (CPT2 Products)

Target Details

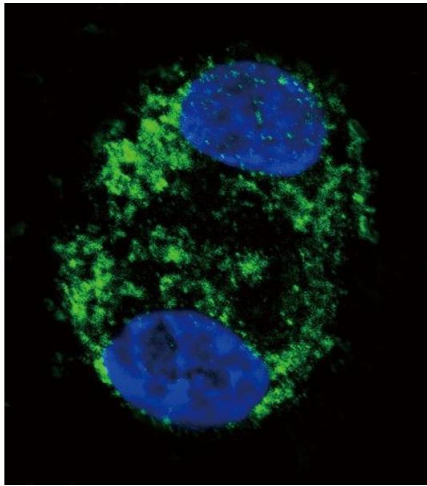
Background:	Carnitine palmitoyltransferase II precursor (CPT2) is a nuclear protein which is transported to the mitochondrial inner membrane. CPT2 together with carnitine palmitoyltransferase I oxidizes long-chain fatty acids in the mitochondria. Defects in this gene are associated with mitochondrial long-chain fatty-acid (LCFA) oxidation disorders.
Molecular Weight:	73777
Gene ID:	1376
NCBI Accession:	NP_000089
UniProt:	P23786
Pathways:	Regulation of Lipid Metabolism by PPARalpha, Monocarboxylic Acid Catabolic Process

Application Details

Application Notes:	IF: 1:10~50. WB: 1:1000
Restrictions:	For Research Use only

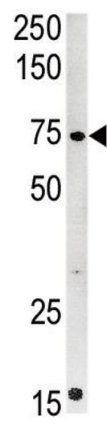
Handling

Format:	Liquid
Buffer:	Purified polyclonal antibody supplied in PBS with 0.09 % (W/V) sodium azide.
Preservative:	Sodium azide
Precaution of Use:	This product contains Sodium azide: a POISONOUS AND HAZARDOUS SUBSTANCE which should be handled by trained staff only.
Storage:	4 °C,-20 °C
Storage Comment:	Maintain refrigerated at 2-8 °C for up to 6 months. For long term storage store at -20 °C in small aliquots to prevent freeze-thaw cycles.
Expiry Date:	6 months



Immunofluorescence

Image 1. Confocal immunofluorescent analysis of CPT2 Antibody (C-term) (ABIN389105 and ABIN2839295) with HepG2 cell followed by Alexa Fluor 488-conjugated goat anti-rabbit IgG (green). DAPI was used to stain the cell nuclear (blue).



Western Blotting

Image 2. Western blot analysis of anti-CPT2 Pab (ABIN389105 and ABIN2839295) in mouse kidney tissue lysate (35 µg/lane). CPT2 (arrow) was detected using the purified Pab.