

Datasheet for ABIN389106
anti-CPT1B antibody (C-Term)[Go to Product page](#)

2 Images

Overview

Quantity:	400 µL
Target:	CPT1B
Binding Specificity:	AA 606-637, C-Term
Reactivity:	Human
Host:	Rabbit
Clonality:	Polyclonal
Conjugate:	This CPT1B antibody is un-conjugated
Application:	Western Blotting (WB), Immunohistochemistry (Paraffin-embedded Sections) (IHC (p))

Product Details

Immunogen:	This CPT1B antibody is generated from rabbits immunized with a KLH conjugated synthetic peptide between 606-637 amino acids from the C-terminal region of human CPT1B.
Clone:	RB4661-4662
Isotype:	Ig Fraction
Purification:	This antibody is prepared by Saturated Ammonium Sulfate (SAS) precipitation followed by dialysis against PBS.

Target Details

Target:	CPT1B
Alternative Name:	CPT1B (CPT1B Products)

Target Details

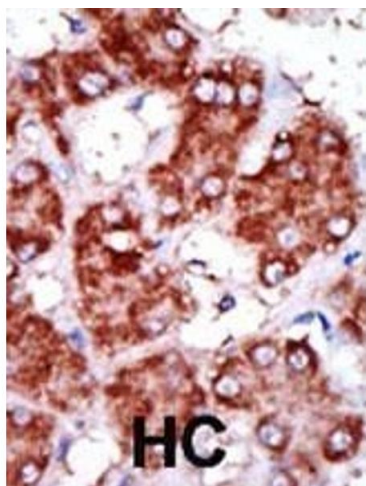
Background:	CPT1B is a member of the carnitine/choline acetyltransferase family, and is the rate-controlling enzyme of the long-chain fatty acid beta-oxidation pathway in muscle mitochondria. This enzyme is required for the net transport of long-chain fatty acyl-CoAs from the cytoplasm into the mitochondria.
Molecular Weight:	87801
Gene ID:	1375
NCBI Accession:	NP_001138606 , NP_001138607 , NP_001138608 , NP_001138609 , NP_004368 , NP_689451 , NP_689452
UniProt:	Q92523
Pathways:	AMPK Signaling , Monocarboxylic Acid Catabolic Process

Application Details

Application Notes:	WB: 1:1000. IHC-P: 1:50~100
Restrictions:	For Research Use only

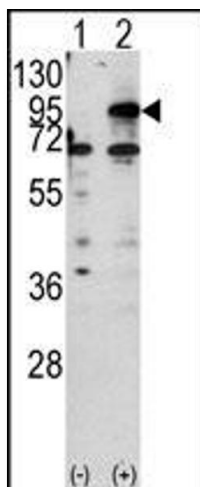
Handling

Format:	Liquid
Buffer:	Purified polyclonal antibody supplied in PBS with 0.09 % (W/V) sodium azide.
Preservative:	Sodium azide
Precaution of Use:	This product contains Sodium azide: a POISONOUS AND HAZARDOUS SUBSTANCE which should be handled by trained staff only.
Storage:	4 °C, -20 °C
Storage Comment:	Maintain refrigerated at 2-8 °C for up to 6 months. For long term storage store at -20 °C in small aliquots to prevent freeze-thaw cycles.
Expiry Date:	6 months



Immunohistochemistry (Paraffin-embedded Sections)

Image 1. Formalin-fixed and paraffin-embedded human cancer tissue reacted with the primary antibody, which was peroxidase-conjugated to the secondary antibody, followed by DAB staining. This data demonstrates the use of this antibody for immunohistochemistry, clinical relevance has not been evaluated. BC = breast carcinoma, HC = hepatocarcinoma.



Western Blotting

Image 2. Western blot analysis of CPT1B (arrow) using rabbit polyclonal CPT1B Antibody (C-term) (ABIN389106 and ABIN2839296). 293 cell lysates (2 µg/lane) either nontransfected (Lane 1) or transiently transfected with the CPT1B gene (Lane 2).