

Datasheet for ABIN389108
anti-SPTLC1 antibody (N-Term)[Go to Product page](#)

1 Image

Overview

Quantity:	400 µL
Target:	SPTLC1
Binding Specificity:	AA 26-57, N-Term
Reactivity:	Human, Mouse
Host:	Rabbit
Clonality:	Polyclonal
Conjugate:	This SPTLC1 antibody is un-conjugated
Application:	Western Blotting (WB)

Product Details

Immunogen:	This SPTLC1 antibody is generated from rabbits immunized with a KLH conjugated synthetic peptide between 26-57 amino acids from the N-terminal region of human SPTLC1.
Clone:	RB4763
Isotype:	Ig Fraction
Predicted Reactivity:	Pr
Purification:	This antibody is prepared by Saturated Ammonium Sulfate (SAS) precipitation followed by dialysis against PBS.

Target Details

Target:	SPTLC1
---------	--------

Target Details

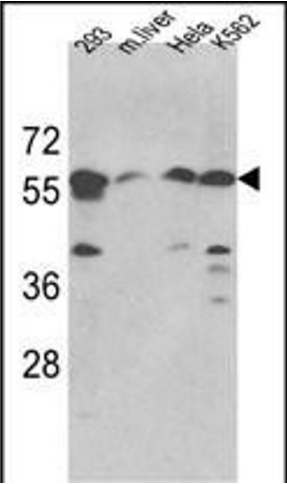
Alternative Name:	SPTLC1 (SPTLC1 Products)
Background:	Serine palmitoyltransferase (SPT) is the key enzyme in sphingolipid biosynthesis. It catalyzes the pyridoxal-5-prime-phosphate-dependent condensation of L-serine and palmitoyl-CoA to 3-oxosphinganine.
Molecular Weight:	52744
Gene ID:	10558
NCBI Accession:	NP_001268232 , NP_006406 , NP_847894
UniProt:	O15269

Application Details

Application Notes:	WB: 1:1000
Restrictions:	For Research Use only

Handling

Format:	Liquid
Buffer:	Purified polyclonal antibody supplied in PBS with 0.09 % (W/V) sodium azide.
Preservative:	Sodium azide
Precaution of Use:	This product contains Sodium azide: a POISONOUS AND HAZARDOUS SUBSTANCE which should be handled by trained staff only.
Storage:	4 °C,-20 °C
Storage Comment:	Maintain refrigerated at 2-8 °C for up to 6 months. For long term storage store at -20 °C in small aliquots to prevent freeze-thaw cycles.
Expiry Date:	6 months



Western Blotting

Image 1. Western blot analysis of hSPTLC1-S41 (ABIN389108 and ABIN2839298) in 293, HeLa, K562 cell line and mouse liver tissue lysates (35 µg/lane). SPTLC1 (arrow) was detected using the purified Pab.