

Datasheet for ABIN389142
anti-SULT4A1 antibody (N-Term)[Go to Product page](#)

1 Image

Overview

Quantity:	400 µL
Target:	SULT4A1
Binding Specificity:	AA 1-30, N-Term
Reactivity:	Human
Host:	Rabbit
Clonality:	Polyclonal
Conjugate:	This SULT4A1 antibody is un-conjugated
Application:	Western Blotting (WB)

Product Details

Immunogen:	This SULT4A1a/b antibody is generated from rabbits immunized with a KLH conjugated synthetic peptide between 1-30 amino acids from the N-terminal region of human SULT4A1a/b.
Clone:	RB5139
Isotype:	Ig Fraction
Purification:	This antibody is prepared by Saturated Ammonium Sulfate (SAS) precipitation followed by dialysis against PBS.

Target Details

Target:	SULT4A1
Alternative Name:	SULT4A1a/b (SULT4A1 Products)

Target Details

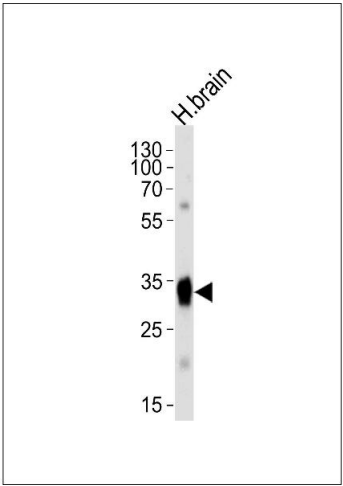
Background:	Sulfotransferase enzymes catalyze the sulfate conjugation of many hormones, neurotransmitters, drugs, and xenobiotic compounds. These cytosolic enzymes are different in their tissue distributions and substrate specificities. The gene structure(number and length of exons) is similar among family members. SULT4A1 isoforms a and b are selectively expressed in brain tissue. Isoform a is the predominant of the two isoforms of this protein. Isoform b includes an alternate segment, compared to isoform a, that causes a frameshift. The resulting protein (isoform b) has a distinct and shorter C-terminus when compared to isoform a.
Molecular Weight:	33085
Gene ID:	25830
NCBI Accession:	NP_055166
UniProt:	Q9BR01

Application Details

Application Notes:	WB: 1:1000
Restrictions:	For Research Use only

Handling

Format:	Liquid
Buffer:	Purified polyclonal antibody supplied in PBS with 0.09 % (W/V) sodium azide.
Preservative:	Sodium azide
Precaution of Use:	This product contains Sodium azide: a POISONOUS AND HAZARDOUS SUBSTANCE which should be handled by trained staff only.
Storage:	4 °C,-20 °C
Storage Comment:	Maintain refrigerated at 2-8 °C for up to 6 months. For long term storage store at -20 °C in small aliquots to prevent freeze-thaw cycles.
Expiry Date:	6 months



Western Blotting

Image 1. Western blot analysis of lysate from human brain tissue lysate, using SULT4A1a/b Antibody (M1) (ABIN389142 and ABIN2839316). (ABIN389142 and ABIN2839316) was diluted at 1:1000 at each lane. A goat anti-rabbit IgG H&L(HRP) at 1:5000 dilution was used as the secondary antibody. Lysate at 35 µg per lane.