

Datasheet for ABIN389143  
**anti-SMC2 antibody (C-Term)**[Go to Product page](#)

## 1 Image

## Overview

Quantity:	400 µL
Target:	SMC2
Binding Specificity:	AA 1166-1197, C-Term
Reactivity:	Human
Host:	Rabbit
Clonality:	Polyclonal
Conjugate:	This SMC2 antibody is un-conjugated
Application:	Western Blotting (WB)

## Product Details

Immunogen:	This SMC2 antibody is generated from rabbits immunized with a KLH conjugated synthetic peptide between 1166-1197 amino acids from the C-terminal region of human SMC2.
Clone:	RB14711
Isotype:	Ig Fraction
Purification:	This antibody is prepared by Saturated Ammonium Sulfate (SAS) precipitation followed by dialysis against PBS.

## Target Details

Target:	SMC2
Alternative Name:	SMC2 ( <a href="#">SMC2 Products</a> )

## Target Details

**Background:** SMC2 is a central component of the condensin complex, a complex required for conversion of interphase chromatin into mitotic-like condense chromosomes. The condensin complex probably introduces positive supercoils into relaxed DNA in the presence of type I topoisomerases and converts nicked DNA into positive knotted forms in the presence of type II topoisomerases.

**Molecular Weight:** 135656

**Gene ID:** 10592

**NCBI Accession:** [NP\\_001036015](#), [NP\\_001036016](#), [NP\\_001252531](#), [NP\\_006435](#)

**UniProt:** [O95347](#)

## Application Details

**Application Notes:** WB: 1:1000

**Restrictions:** For Research Use only

## Handling

**Format:** Liquid

**Buffer:** Purified polyclonal antibody supplied in PBS with 0.09 % (W/V) sodium azide.

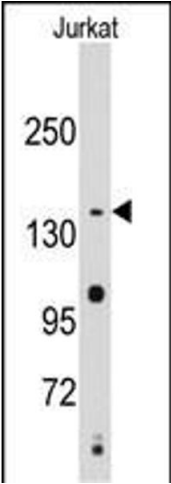
**Preservative:** Sodium azide

**Precaution of Use:** This product contains Sodium azide: a POISONOUS AND HAZARDOUS SUBSTANCE which should be handled by trained staff only.

**Storage:** 4 °C,-20 °C

**Storage Comment:** Maintain refrigerated at 2-8 °C for up to 6 months. For long term storage store at -20 °C in small aliquots to prevent freeze-thaw cycles.

**Expiry Date:** 6 months



Western Blotting

**Image 1.** Western blot analysis of anti-SMC2 Antibody (C-term) (ABIN389143 and ABIN2837920) in Jurkat cell line lysates (35 µg/lane). SMC2(arrow) was detected using the purified Pab.