

Datasheet for ABIN389146
anti-Cyclin D1 antibody (AA 68-97)

5 Images

1 Publication

[Go to Product page](#)

Overview

Quantity:	400 µL
Target:	Cyclin D1 (CCND1)
Binding Specificity:	AA 68-97
Reactivity:	Human, Mouse
Host:	Rabbit
Clonality:	Polyclonal
Conjugate:	This Cyclin D1 antibody is un-conjugated
Application:	Western Blotting (WB), Immunofluorescence (IF), Immunohistochemistry (Paraffin-embedded Sections) (IHC (p))

Product Details

Immunogen:	This Cyclin D1 antibody is generated from rabbits immunized with a KLH conjugated synthetic peptide between 68-97 amino acids from human Cyclin D1.
Clone:	RB8066
Isotype:	Ig Fraction
Predicted Reactivity:	B
Purification:	This antibody is purified through a protein A column, followed by peptide affinity purification.

Target Details

Target:	Cyclin D1 (CCND1)
---------	-------------------

Target Details

Alternative Name:	Cyclin D1 (CCND1 Products)
Background:	CCND1 belongs to the highly conserved cyclin family, whose members are characterized by a dramatic periodicity in protein abundance throughout the cell cycle. Cyclins function as regulators of CDK kinases. Different cyclins exhibit distinct expression and degradation patterns which contribute to the temporal coordination of each mitotic event. Cyclin D1 forms a complex with and functions as a regulatory subunit of CDK4 or CDK6, whose activity is required for cell cycle G1/S transition. It has been shown to interact with tumor suppressor protein Rb and the expression of this gene is regulated positively by Rb. Mutations, amplification and overexpression of the gene encoding this protein, which alters cell cycle progression, are observed frequently in a variety of tumors and may contribute to tumorigenesis.
Molecular Weight:	33729
Gene ID:	595
NCBI Accession:	NP_444284
UniProt:	P24385
Pathways:	PI3K-Akt Signaling , Cell Division Cycle , Mitotic G1-G1/S Phases , ER-Nucleus Signaling

Application Details

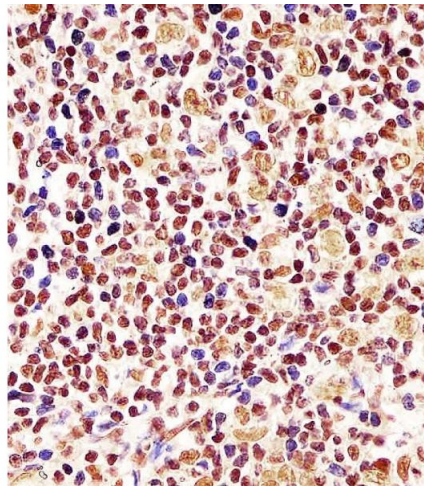
Application Notes:	IF: 1:10~50. WB: 1:1000. WB: 1:2000. WB: 1:2000. IHC-P: 1:25
Restrictions:	For Research Use only

Handling

Format:	Liquid
Buffer:	Purified polyclonal antibody supplied in PBS with 0.09 % (W/V) sodium azide.
Preservative:	Sodium azide
Precaution of Use:	This product contains Sodium azide: a POISONOUS AND HAZARDOUS SUBSTANCE which should be handled by trained staff only.
Storage:	4 °C,-20 °C
Storage Comment:	Maintain refrigerated at 2-8 °C for up to 6 months. For long term storage store at -20 °C in small aliquots to prevent freeze-thaw cycles.
Expiry Date:	6 months

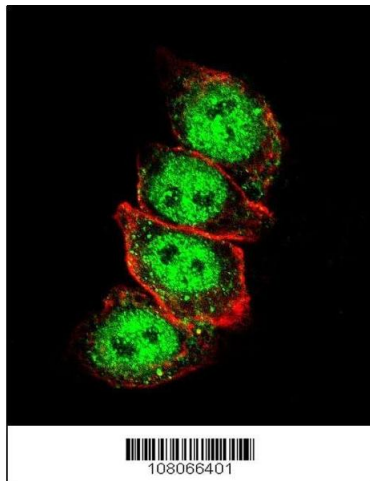
Product cited in: Wang, Wang, Liu, Liu, Tay, Walsh, Yang, Wu: "CRISPR/Cas9 mediated genome editing of *Helicoverpa armigera* with mutations of an ABC transporter gene *HaABCA2* confers resistance to *Bacillus thuringiensis* Cry2A toxins." in: **Insect biochemistry and molecular biology**, Vol. 87, pp. 147-153, (2017) ([PubMed](#)).

Images



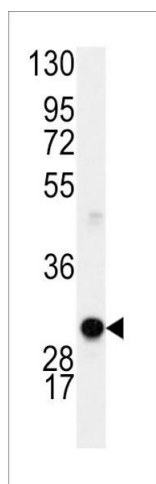
Immunohistochemistry (Paraffin-embedded Sections)

Image 1. D staining Cyclin D1 in human tonsil tissue sections by Immunohistochemistry (IHC-P - paraformaldehyde-fixed, paraffin-embedded sections). Tissue was fixed with formaldehyde and blocked with 3 % BSA for 0.5 hour at room temperature, antigen retrieval was by heat mediation with a citrate buffer (pH 6). Samples were incubated with primary antibody (1/25) for 1 hours at 37 °C. A undiluted biotinylated goat polyvalent antibody was used as the secondary antibody.



Immunofluorescence

Image 2. Confocal immunofluorescent analysis of Cyclin D1 Antibody (S90) (ABIN389146 and ABIN2850438) with Hela cell followed by Alexa Fluor 488-conjugated goat anti-rabbit IgG (green). Actin filaments have been labeled with Alexa Fluor 555 phalloidin (red).



Western Blotting

Image 3. Western blot analysis of anti-Cyclin D1 Antibody (S90) (ABIN389146 and ABIN2850438) in mouse lung lysates (35 µg/lane). Cyclin D1 (arrow) was detected using the purified Pab.

Please check the [product details page](#) for more images. Overall 5 images are available for ABIN389146.