

Datasheet for ABIN389164
anti-DEAF1 antibody (C-Term)[Go to Product page](#)

1 Image

Overview

Quantity:	400 µL
Target:	DEAF1
Binding Specificity:	AA 368-400, C-Term
Reactivity:	Human
Host:	Rabbit
Clonality:	Polyclonal
Conjugate:	This DEAF1 antibody is un-conjugated
Application:	Western Blotting (WB)

Product Details

Immunogen:	This Deaf1 antibody is generated from rabbits immunized with a KLH conjugated synthetic peptide between 368-400 amino acids from the C-terminal region of human Deaf1.
Clone:	RB10698
Isotype:	Ig Fraction
Predicted Reactivity:	Rat
Purification:	This antibody is purified through a protein A column, followed by peptide affinity purification.

Target Details

Target:	DEAF1
Alternative Name:	Deaf1 (DEAF1 Products)

Target Details

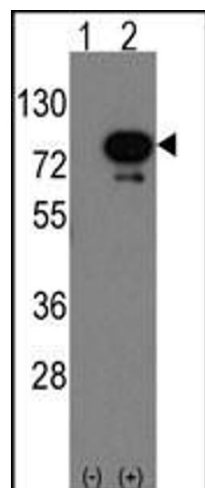
Background:	Drosophila Deformed epidermal autoregulatory factor 1 (DEAF-1) is a DNA-binding protein that interacts with regulatory sequences first described in the Deformed epidermal autoregulatory element.
Molecular Weight:	59633
Gene ID:	54006
NCBI Accession:	NP_058570
UniProt:	Q9Z1T5
Pathways:	Tube Formation

Application Details

Application Notes:	WB: 1:1000
Restrictions:	For Research Use only

Handling

Format:	Liquid
Buffer:	Purified polyclonal antibody supplied in PBS with 0.09 % (W/V) sodium azide.
Preservative:	Sodium azide
Precaution of Use:	This product contains Sodium azide: a POISONOUS AND HAZARDOUS SUBSTANCE which should be handled by trained staff only.
Storage:	4 °C,-20 °C
Storage Comment:	Maintain refrigerated at 2-8 °C for up to 6 months. For long term storage store at -20 °C in small aliquots to prevent freeze-thaw cycles.
Expiry Date:	6 months



Western Blotting

Image 1. Western blot analysis of Deaf1 (arrow) using rabbit polyclonal Deaf1 Antibody (Human C-term) (ABIN389164 and ABIN2839330). 293 cell lysates (2 μ g/lane) either nontransfected (Lane 1) or transiently transfected with the Deaf1 gene (Lane 2) (Origene Technologies).