

Datasheet for ABIN389181
anti-PHPT1 antibody (N-Term)[Go to Product page](#)

2 Images

Overview

Quantity:	400 µL
Target:	PHPT1
Binding Specificity:	AA 1-30, N-Term
Reactivity:	Human
Host:	Rabbit
Clonality:	Polyclonal
Conjugate:	This PHPT1 antibody is un-conjugated
Application:	Western Blotting (WB), Immunohistochemistry (Paraffin-embedded Sections) (IHC (p))

Product Details

Immunogen:	This PHPT1 antibody is generated from rabbits immunized with a KLH conjugated synthetic peptide between 1-30 amino acids from the N-terminal region of human PHPT1.
Clone:	RB10870
Isotype:	Ig Fraction
Purification:	This antibody is purified through a protein A column, followed by peptide affinity purification.

Target Details

Target:	PHPT1
Alternative Name:	PHPT1 (PHPT1 Products)
Background:	PHPT1 is an EDTA-insensitive phosphohistidine phosphatase that catalyzes the

Target Details

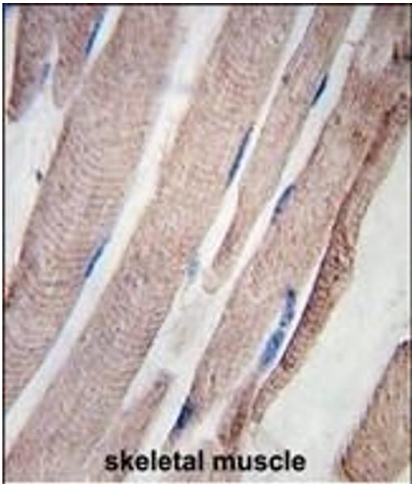
	dephosphorylation of phosphopeptide I (Ek et al., 2002 [PubMed 12383260]).[supplied by OMIM].
Molecular Weight:	13833
Gene ID:	29085
NCBI Accession:	NP_054891
UniProt:	Q9NRX4
Pathways:	Positive Regulation of Peptide Hormone Secretion

Application Details

Application Notes:	WB: 1:1000. IHC-P: 1:10~50
Restrictions:	For Research Use only

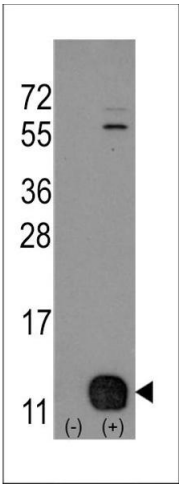
Handling

Format:	Liquid
Buffer:	Purified polyclonal antibody supplied in PBS with 0.09 % (W/V) sodium azide.
Preservative:	Sodium azide
Precaution of Use:	This product contains Sodium azide: a POISONOUS AND HAZARDOUS SUBSTANCE which should be handled by trained staff only.
Storage:	4 °C,-20 °C
Storage Comment:	Maintain refrigerated at 2-8 °C for up to 6 months. For long term storage store at -20 °C in small aliquots to prevent freeze-thaw cycles.
Expiry Date:	6 months



Immunohistochemistry (Paraffin-embedded Sections)

Image 1. Formalin-fixed and paraffin-embedded human skeletal muscle tissue reacted with PHPT1 Antibody (C-term), which was peroxidase-conjugated to the secondary antibody, followed by DAB staining. This data demonstrates the use of this antibody for immunohistochemistry, clinical relevance has not been evaluated.



Western Blotting

Image 2. Western blot analysis of PHPT1 (arrow) using rabbit polyclonal PHPT1 Antibody (Human N-term). (ABIN389181 and ABIN2839344). 293 cell lysates (2 μ g/lane) either nontransfected (Lane 1) or transiently transfected with the PHPT1 gene (Lane 2) (Origene Technologies).