

Datasheet for ABIN389182  
**anti-PHPT1 antibody (C-Term)**



[Go to Product page](#)

2 Images

## Overview

Quantity:	400 µL
Target:	PHPT1
Binding Specificity:	AA 88-117, C-Term
Reactivity:	Human
Host:	Rabbit
Clonality:	Polyclonal
Conjugate:	This PHPT1 antibody is un-conjugated
Application:	Western Blotting (WB), Immunohistochemistry (Paraffin-embedded Sections) (IHC (p))

## Product Details

Immunogen:	This PHPT1 antibody is generated from rabbits immunized with a KLH conjugated synthetic peptide between 88-117 amino acids from the C-terminal region of human PHPT1.
Clone:	RB10636
Isotype:	Ig Fraction
Purification:	This antibody is purified through a protein A column, followed by peptide affinity purification.

## Target Details

Target:	PHPT1
Alternative Name:	PHPT1 ( <a href="#">PHPT1 Products</a> )
Background:	PHPT1 is an EDTA-insensitive phosphohistidine phosphatase that catalyzes the

## Target Details

---

dephosphorylation of phosphopeptide I (Ek et al., 2002 [PubMed 12383260]).[supplied by OMIM].

Molecular Weight: 13833

Gene ID: 29085

NCBI Accession: [NP\\_054891](#)

UniProt: [Q9NRX4](#)

Pathways: [Positive Regulation of Peptide Hormone Secretion](#)

## Application Details

---

Application Notes: WB: 1:1000. IHC-P: 1:10~50

Restrictions: For Research Use only

## Handling

---

Format: Liquid

Buffer: Purified polyclonal antibody supplied in PBS with 0.09 % (W/V) sodium azide.

Preservative: Sodium azide

Precaution of Use: This product contains Sodium azide: a POISONOUS AND HAZARDOUS SUBSTANCE which should be handled by trained staff only.

Storage: 4 °C,-20 °C

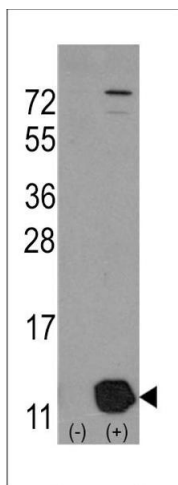
Storage Comment: Maintain refrigerated at 2-8 °C for up to 6 months. For long term storage store at -20 °C in small aliquots to prevent freeze-thaw cycles.

Expiry Date: 6 months



### Immunohistochemistry (Paraffin-embedded Sections)

**Image 1.** Formalin-fixed and paraffin-embedded human skeletal muscle tissue reacted with PHPT1 Antibody (N-term) (ABIN389182 and ABIN2839345), which was peroxidase-conjugated to the secondary antibody, followed by DAB staining. This data demonstrates the use of this antibody for immunohistochemistry, clinical relevance has not been evaluated.



### Western Blotting

**Image 2.** Western blot analysis of PHPT1 (arrow) using rabbit polyclonal PHPT1 Antibody (Human C-term). (ABIN1882147 and ABIN2839167). 293 cell lysates (2  $\mu$ g/lane) either nontransfected (Lane 1) or transiently transfected with the PHPT1 gene (Lane 2) (Origene Technologies).