

Datasheet for ABIN389189

anti-KLF4 antibody

4 Images

[Go to Product page](#)

Overview

Quantity:	400 µL
Target:	KLF4
Reactivity:	Human
Host:	Rabbit
Clonality:	Polyclonal
Conjugate:	This KLF4 antibody is un-conjugated
Application:	Western Blotting (WB), Immunofluorescence (IF), Immunohistochemistry (Paraffin-embedded Sections) (IHC (p))

Product Details

Immunogen:	This KLF4 antibody is generated from rabbits immunized with a his tag recombinant protein of human KLF4.
Clone:	RB17718
Isotype:	Ig Fraction
Purification:	This antibody is prepared by Saturated Ammonium Sulfate (SAS) precipitation followed by dialysis against PBS.

Target Details

Target:	KLF4
Alternative Name:	KLF4 (KLF4 Products)
Background:	Kr

Target Details

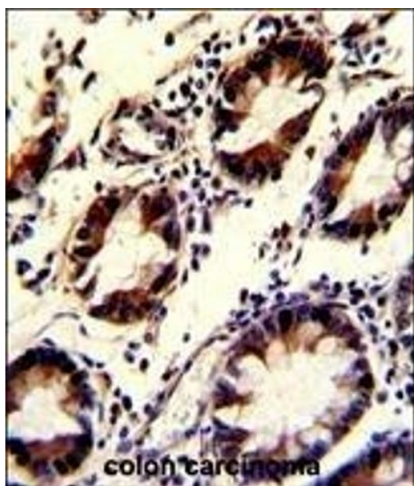
Molecular Weight:	54671
Gene ID:	9314
NCBI Accession:	NP_004226
UniProt:	O43474
Pathways:	Peptide Hormone Metabolism, Stem Cell Maintenance

Application Details

Application Notes:	IF: 1:10~50. IF: 1:10~50. WB: 1:1000. IHC-P: 1:50~100
Restrictions:	For Research Use only

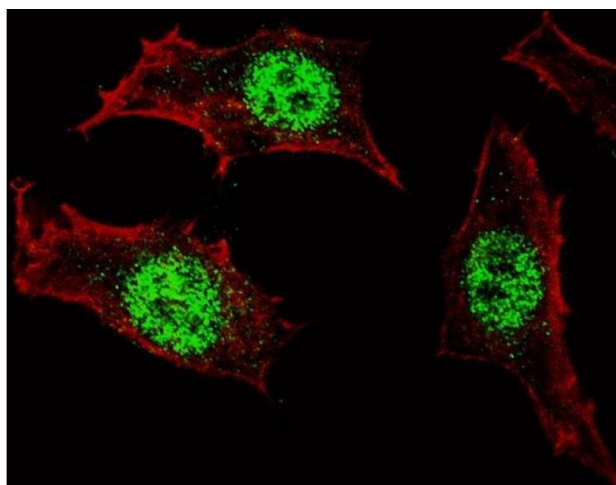
Handling

Format:	Liquid
Buffer:	Purified polyclonal antibody supplied in PBS with 0.09 % (W/V) sodium azide.
Preservative:	Sodium azide
Precaution of Use:	This product contains Sodium azide: a POISONOUS AND HAZARDOUS SUBSTANCE which should be handled by trained staff only.
Storage:	4 °C,-20 °C
Storage Comment:	Maintain refrigerated at 2-8 °C for up to 6 months. For long term storage store at -20 °C in small aliquots to prevent freeze-thaw cycles.
Expiry Date:	6 months



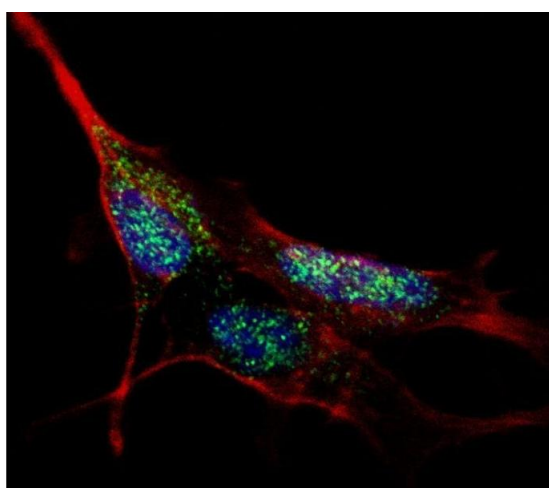
Immunohistochemistry (Paraffin-embedded Sections)

Image 1. Formalin-fixed and paraffin-embedded human colon carcinoma with KLF4 Antibody, which was peroxidase-conjugated to the secondary antibody, followed by DAB staining. This data demonstrates the use of this antibody for immunohistochemistry, clinical relevance has not been evaluated.



Immunofluorescence

Image 2. Fluorescent confocal image of HeLa cells stained with (ABIN389189 and ABIN2839352) KLF4 antibody. HeLa cells were fixed with 4 % PFA (20 min), permeabilized with Triton X-100 (0.2 %, 30 min), then incubated with (ABIN389189 and ABIN2839352) KLF4 primary antibody (1:100, 2 h at room temperature). For secondary antibody, Alexa Fluor® 488 conjugated donkey anti-rabbit antibody (green) was used (1:1000, 1h). Cytoplasmic actin was counterstained with Alexa Fluor® 555 (red) conjugated Phalloidin (5.25 µM, 25 min). KLF4 immunoreactivity is localized specifically to the nuclei in HeLa cells.



Immunofluorescence

Image 3. Fluorescent confocal image of SY5Y cells stained with (ABIN389189 and ABIN2839352) KLF4 antibody. SY5Y cells were fixed with 4 % PFA (20 min), permeabilized with Triton X-100 (0.2 %, 30 min), then incubated with (ABIN389189 and ABIN2839352) KLF4 primary antibody (1:100, 2 h at room temperature). For secondary antibody, Alexa Fluor® 488 conjugated donkey anti-rabbit antibody (green) was used (1:1000, 1h). Cytoplasmic actin was counterstained with Alexa Fluor® 555 (red) conjugated Phalloidin (5.25 µM, 25 min). Nuclei were counterstained with Hoechst 33342 (blue) (10 µg/mL, 3 min). KLF4

immunoreactivity is localized to the nuclei in SY5Y cells.

Please check the [product details page](#) for more images. Overall 4 images are available for ABIN389189.