

Datasheet for ABIN389190  
**anti-KLF4 antibody (AA 481-504)**[Go to Product page](#)

## 4 Images

## Overview

Quantity:	400 µL
Target:	KLF4
Binding Specificity:	AA 481-504
Reactivity:	Human
Host:	Rabbit
Clonality:	Polyclonal
Conjugate:	This KLF4 antibody is un-conjugated
Application:	Western Blotting (WB), Immunofluorescence (IF)

## Product Details

Immunogen:	This KLF4 antibody is generated from rabbits immunized with a KLH conjugated synthetic peptide between 481-504 amino acids from human KLF4.
Clone:	RB18934
Isotype:	Ig Fraction
Predicted Reactivity:	M, Rat
Purification:	This antibody is purified through a protein A column, followed by peptide affinity purification.

## Target Details

Target:	KLF4
Alternative Name:	KLF4 ( <a href="#">KLF4 Products</a> )

## Target Details

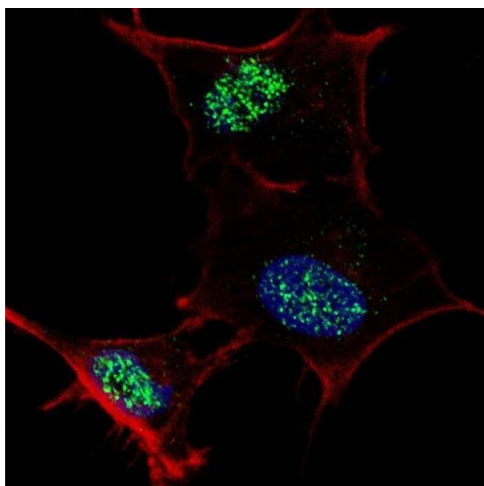
Background:	Kr
Molecular Weight:	54671
Gene ID:	9314
NCBI Accession:	<a href="#">NP_004226</a>
UniProt:	<a href="#">O43474</a>
Pathways:	<a href="#">Peptide Hormone Metabolism</a> , <a href="#">Stem Cell Maintenance</a>

## Application Details

Application Notes:	IF: 1:25. IF: 1:10~50. IF: 1:10~50. WB: 1:1000
Restrictions:	For Research Use only

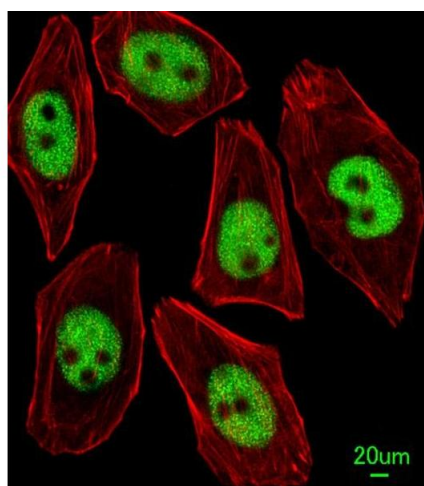
## Handling

Format:	Liquid
Buffer:	Purified polyclonal antibody supplied in PBS with 0.09 % (W/V) sodium azide.
Preservative:	Sodium azide
Precaution of Use:	This product contains Sodium azide: a POISONOUS AND HAZARDOUS SUBSTANCE which should be handled by trained staff only.
Storage:	4 °C,-20 °C
Storage Comment:	Maintain refrigerated at 2-8 °C for up to 6 months. For long term storage store at -20 °C in small aliquots to prevent freeze-thaw cycles.
Expiry Date:	6 months



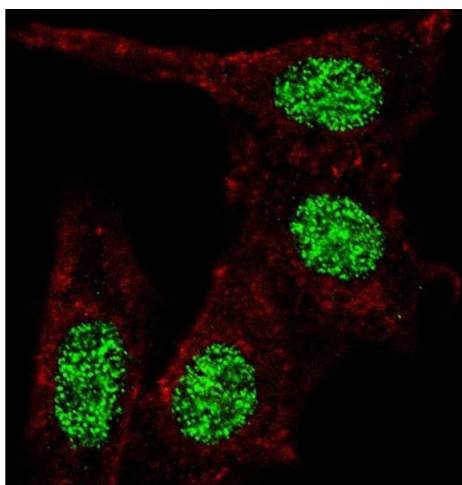
#### Immunofluorescence

**Image 1.** Fluorescent confocal image of SY5Y cells stained with f KLF4 antibody. SY5Y cells were fixed with 4 % PFA (20 min), permeabilized with Triton X-100 (0.2 %, 30 min), then incubated with f KLF4 primary antibody (1:100, 2 h at room temperature). For secondary antibody, Alexa Fluor® 488 conjugated donkey anti-rabbit antibody (green) was used (1:1000, 1h). Cytoplasmic actin was counterstained with Alexa Fluor® 555 (red) conjugated Phalloidin (5.25  $\mu$ M, 25 min). Note the highly specific localization of the phosphorylated KLF4 immunoreactivity to the nuclei.



#### Immunofluorescence

**Image 2.** Immunofluorescent analysis of cells, using KLF4 Antibody f. f was diluted at 1:25 dilution. Alexa Fluor 488-conjugated goat anti-rabbit IgG at 1:400 dilution was used as the secondary antibody (green). Cytoplasmic actin was counterstained with Dylight Fluor® 554 (red) conjugated Phalloidin (red).



#### Immunofluorescence

**Image 3.** Fluorescent confocal image of HeLa cells stained with f KLF4 antibody. HeLa cells were fixed with 4 % PFA (20 min), permeabilized with Triton X-100 (0.2 %, 30 min), then incubated with f KLF4 primary antibody (1:100, 2 h at room temperature). For secondary antibody, Alexa Fluor® 488 conjugated donkey anti-rabbit antibody (green) was used (1:1000, 1h). Cytoplasmic actin was counterstained with Alexa Fluor® 555 (red) conjugated Phalloidin (5.25  $\mu$ M, 25 min). Note the highly specific localization of the phosphorylated KLF4 immunoreactivity to the nuclei but not the cytoplasm.

Please check the [product details page](#) for more images. Overall 4 images are available for ABIN389190.