



[Go to Product page](#)

Datasheet for ABIN389191

## anti-ALDOA antibody (N-Term)

### 3 Images

#### Overview

Quantity:	400 µL
Target:	ALDOA
Binding Specificity:	AA 66-95, N-Term
Reactivity:	Human
Host:	Rabbit
Clonality:	Polyclonal
Conjugate:	This ALDOA antibody is un-conjugated
Application:	Western Blotting (WB), Immunofluorescence (IF), Immunohistochemistry (Paraffin-embedded Sections) (IHC (p))

#### Product Details

Immunogen:	This Aldolase (ALDOA) antibody is generated from rabbits immunized with a KLH conjugated synthetic peptide between 66-95 amino acids from the N-terminal region of human Aldolase (ALDOA).
Clone:	RB14944
Isotype:	Ig Fraction
Predicted Reactivity:	M, Rb, Rat
Purification:	This antibody is prepared by Saturated Ammonium Sulfate (SAS) precipitation followed by dialysis against PBS.

## Target Details

---

Target:	ALDOA
Alternative Name:	Aldolase (ALDOA) ( <a href="#">ALDOA Products</a> )
Background:	Aldolase A (fructose-bisphosphate aldolase) is a glycolytic enzyme that catalyzes the reversible conversion of fructose-1,6-bisphosphate to glyceraldehyde 3-phosphate and dihydroxyacetone phosphate. Three aldolase isozymes (A, B, and C), encoded by three different genes, are differentially expressed during development. Aldolase A is found in the developing embryo and is produced in even greater amounts in adult muscle. Aldolase A expression is repressed in adult liver, kidney and intestine and similar to aldolase C levels in brain and other nervous tissue. Aldolase A deficiency has been associated with myopathy and hemolytic anemia.
Molecular Weight:	39420
Gene ID:	226
NCBI Accession:	<a href="#">NP_000025</a> , <a href="#">NP_001121089</a> , <a href="#">NP_001230106</a> , <a href="#">NP_908930</a> , <a href="#">NP_908932</a>
UniProt:	<a href="#">P04075</a>
Pathways:	<a href="#">Ribonucleoside Biosynthetic Process</a>

## Application Details

---

Application Notes:	IF: 1:10~50. WB: 1:1000. IHC-P: 1:10~50
Restrictions:	For Research Use only

## Handling

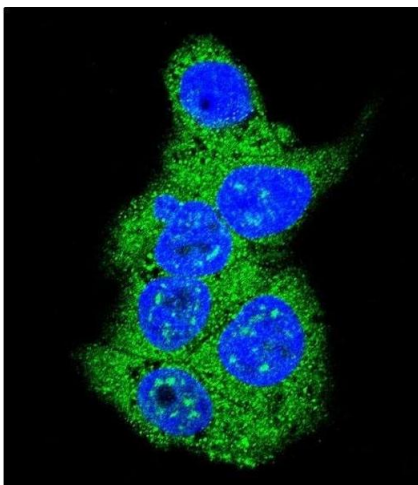
---

Format:	Liquid
Buffer:	Purified polyclonal antibody supplied in PBS with 0.09 % (W/V) sodium azide.
Preservative:	Sodium azide
Precaution of Use:	This product contains Sodium azide: a POISONOUS AND HAZARDOUS SUBSTANCE which should be handled by trained staff only.
Storage:	4 °C,-20 °C
Storage Comment:	Maintain refrigerated at 2-8 °C for up to 6 months. For long term storage store at -20 °C in small aliquots to prevent freeze-thaw cycles.
Expiry Date:	6 months



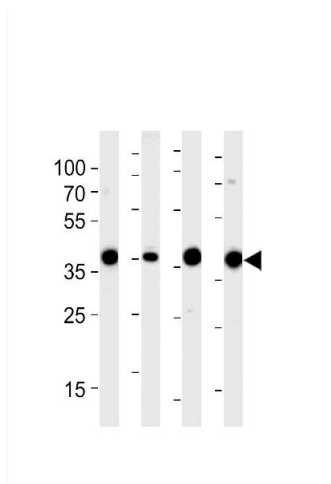
### Immunohistochemistry (Paraffin-embedded Sections)

**Image 1.** Formalin-fixed and paraffin-embedded human lung carcinoma tissue reacted with ALDOA antibody (N-term) (ABIN389191 and ABIN2839354), which was peroxidase-conjugated to the secondary antibody, followed by DAB staining. This data demonstrates the use of this antibody for immunohistochemistry, clinical relevance has not been evaluated.



### Immunofluorescence

**Image 2.** Confocal immunofluorescent analysis of Aldolase (ALDOA) Antibody (N-term) (ABIN389191 and ABIN2839354) with HepG2 cell followed by Alexa Fluor 488-conjugated goat anti-rabbit IgG (green). DAPI was used to stain the cell nuclear (blue).



### Western Blotting

**Image 3.** Western blot analysis of lysates from 293RD, mouse NIH/3T3, rat L6 cell line (from left to right), using ALDOA Antibody (N-term) (ABIN389191 and ABIN2839354). (ABIN389191 and ABIN2839354) was diluted at 1:1000 at each lane. A goat anti-rabbit IgG H&L(HRP) at 1:5000 dilution was used as the secondary antibody. Lysates at 35 µg per lane.