

Datasheet for ABIN389206
anti-AKR1B1 antibody (AA 102-135)

5 Images

[Go to Product page](#)

Overview

Quantity:	400 µL
Target:	AKR1B1
Binding Specificity:	AA 102-135
Reactivity:	Human
Host:	Rabbit
Clonality:	Polyclonal
Conjugate:	This AKR1B1 antibody is un-conjugated
Application:	Western Blotting (WB), Immunofluorescence (IF), Immunohistochemistry (Paraffin-embedded Sections) (IHC (p))

Product Details

Immunogen:	This AKR1B1 antibody is generated from rabbits immunized with a KLH conjugated synthetic peptide between 102-135 amino acids from the Central region of human AKR1B1.
Clone:	RB14877
Isotype:	Ig Fraction
Purification:	This antibody is prepared by Saturated Ammonium Sulfate (SAS) precipitation followed by dialysis against PBS.

Target Details

Target:	AKR1B1
Alternative Name:	AKR1B1 (AKR1B1 Products)

Target Details

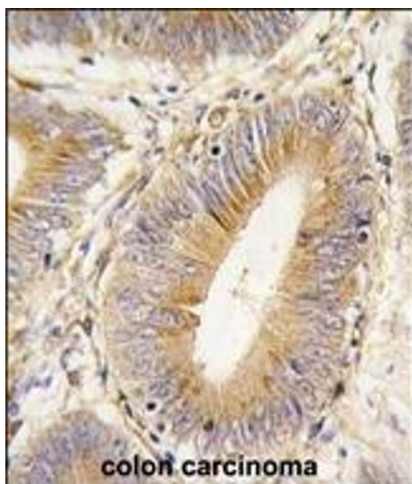
Background:	AKR1B1 is a member of the aldo/keto reductase superfamily, which consists of more than 40 known enzymes and proteins. This protein catalyzes the reduction of a number of aldehydes, including the aldehyde form of glucose, and is thereby implicated in the development of diabetic complications by catalyzing the reduction of glucose to sorbitol.
Molecular Weight:	35853
Gene ID:	231
NCBI Accession:	NP_001619
UniProt:	P15121
Pathways:	Metabolism of Steroid Hormones and Vitamin D , C21-Steroid Hormone Metabolic Process , Monocarboxylic Acid Catabolic Process

Application Details

Application Notes:	IF: 1:10~50. WB: 1:8000. WB: 1:1000. WB: 1:1000. IHC-P: 1:10~50
Restrictions:	For Research Use only

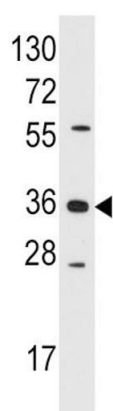
Handling

Format:	Liquid
Buffer:	Purified polyclonal antibody supplied in PBS with 0.09 % (W/V) sodium azide.
Preservative:	Sodium azide
Precaution of Use:	This product contains Sodium azide: a POISONOUS AND HAZARDOUS SUBSTANCE which should be handled by trained staff only.
Storage:	4 °C, -20 °C
Storage Comment:	Maintain refrigerated at 2-8 °C for up to 6 months. For long term storage store at -20 °C in small aliquots to prevent freeze-thaw cycles.
Expiry Date:	6 months



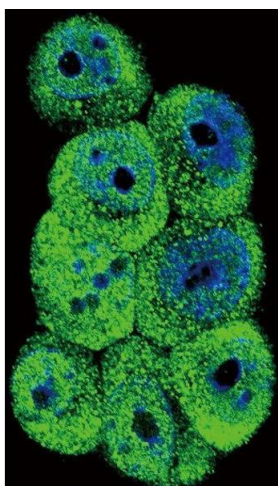
Immunohistochemistry (Paraffin-embedded Sections)

Image 1. Formalin-fixed and paraffin-embedded human colon carcinoma tissue reacted with AKR1B1 antibody (Center) (ABIN389206 and ABIN2839364), which was peroxidase-conjugated to the secondary antibody, followed by DAB staining. This data demonstrates the use of this antibody for immunohistochemistry, clinical relevance has not been evaluated.



Western Blotting

Image 2. Western blot analysis of anti-AKR1B1 Pab (ABIN389206 and ABIN2839364) in Jurkat cell line lysates (35 µg/lane). AKR1B1 (arrow) was detected using the purified Pab.



Immunofluorescence

Image 3. Confocal immunofluorescent analysis of AKR1B1 Antibody (Center) (ABIN389206 and ABIN2839364) with 293 cells followed by Alexa Fluor 488-conjugated goat anti-rabbit IgG (green). DAPI was used to stain the cell nuclei (blue).

Please check the [product details page](#) for more images. Overall 5 images are available for ABIN389206.