

Datasheet for ABIN389213

anti-Vimentin antibody (AA 152-181)**5** Images[Go to Product page](#)

Overview

Quantity:	400 µL
Target:	Vimentin (VIM)
Binding Specificity:	AA 152-181
Reactivity:	Human
Host:	Rabbit
Clonality:	Polyclonal
Conjugate:	This Vimentin antibody is un-conjugated
Application:	Western Blotting (WB), Flow Cytometry (FACS), Immunohistochemistry (Paraffin-embedded Sections) (IHC (p))

Product Details

Immunogen:	This Vimentin antibody is generated from rabbits immunized with a KLH conjugated synthetic peptide between 152-181 amino acids from the Central region of human Vimentin.
Clone:	RB15676
Isotype:	Ig Fraction
Predicted Reactivity:	B, Ha, M, Pig, Rat
Purification:	This antibody is prepared by Saturated Ammonium Sulfate (SAS) precipitation followed by dialysis against PBS.

Target Details

Target:	Vimentin (VIM)
---------	----------------

Target Details

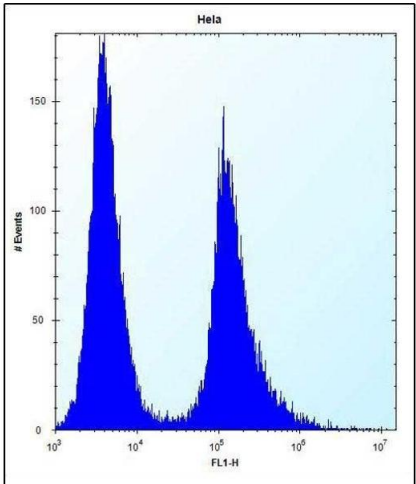
Alternative Name:	Vimentin (VIM Products)
Background:	Along with the microfilaments (actins) and microtubules (tubulins), the intermediate filaments represent a third class of well-characterized cytoskeletal elements. The subunits display a tissue-specific pattern of expression. Desmin (MIM 125660) is the subunit specific for muscle and vimentin the subunit specific for mesenchymal tissue.
Molecular Weight:	53652
Gene ID:	7431
NCBI Accession:	NP_003371
UniProt:	P08670
Pathways:	Caspase Cascade in Apoptosis

Application Details

Application Notes:	WB: 1:1000. WB: 1:1000. IHC-P: 1:10~50. IHC-P: 1:10~50. FC: 1:10~50
Restrictions:	For Research Use only

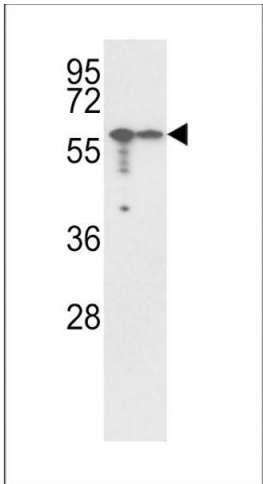
Handling

Format:	Liquid
Buffer:	Purified polyclonal antibody supplied in PBS with 0.09 % (W/V) sodium azide.
Preservative:	Sodium azide
Precaution of Use:	This product contains Sodium azide: a POISONOUS AND HAZARDOUS SUBSTANCE which should be handled by trained staff only.
Storage:	4 °C,-20 °C
Storage Comment:	Maintain refrigerated at 2-8 °C for up to 6 months. For long term storage store at -20 °C in small aliquots to prevent freeze-thaw cycles.
Expiry Date:	6 months



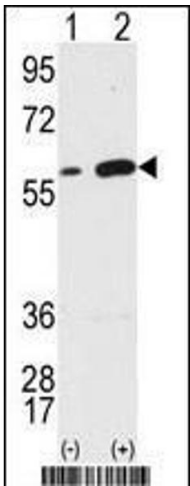
Flow Cytometry

Image 1. Vimentin Antibody (Center) (ABIN389213 and ABIN2839368) flow cytometric analysis of HeLa cells (right histogram) compared to a negative control cell (left histogram). FITC-conjugated donkey-anti-rabbit secondary antibodies were used for the analysis.



Western Blotting

Image 2. Western blot analysis of Vimentin Antibody (Center) (ABIN389213 and ABIN2839368) in , cell line lysates (35 µg/lane). Vimentin (arrow) was detected using the purified Pab.



Western Blotting

Image 3. Western blot analysis of Vimentin (arrow) using Vimentin Antibody (Center) (ABIN389213 and ABIN2839368). 293 cell lysates (2 µg/lane) either nontransfected (Lane 1) or transiently transfected with the VIM gene (Lane 2) (Origene Technologies).

Please check the [product details page](#) for more images. Overall 5 images are available for ABIN389213.