

Datasheet for ABIN389214
anti-SEMA6A antibody (C-Term)

3 Images

[Go to Product page](#)

Overview

Quantity:	400 µL
Target:	SEMA6A
Binding Specificity:	AA 998-1028, C-Term
Reactivity:	Human
Host:	Rabbit
Clonality:	Polyclonal
Conjugate:	This SEMA6A antibody is un-conjugated
Application:	Western Blotting (WB), Immunohistochemistry (Paraffin-embedded Sections) (IHC (p))

Product Details

Immunogen:	This SEMA6A antibody is generated from rabbits immunized with a KLH conjugated synthetic peptide between 998-1028 amino acids from the C-terminal region of human SEMA6A.
Clone:	RB15097
Isotype:	Ig Fraction
Predicted Reactivity:	M
Purification:	This antibody is purified through a protein A column, followed by peptide affinity purification.

Target Details

Target:	SEMA6A
Alternative Name:	SEMA6A (SEMA6A Products)

Target Details

Background:	SEMA6A can act as repulsive axon guidance cues. It may play a role in channeling sympathetic axons into the sympathetic chains and controlling the temporal sequence of sympathetic target innervation.
Molecular Weight:	114395
Gene ID:	57556
NCBI Accession:	NP_065847
UniProt:	Q9H2E6

Application Details

Application Notes:	WB: 1:1000. WB: 1:1000. IHC-P: 1:10~50
Restrictions:	For Research Use only

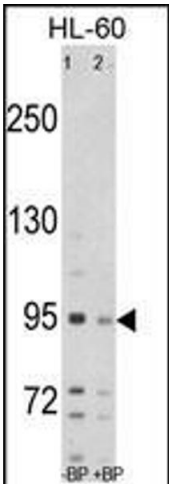
Handling

Format:	Liquid
Buffer:	Purified polyclonal antibody supplied in PBS with 0.09 % (W/V) sodium azide.
Preservative:	Sodium azide
Precaution of Use:	This product contains Sodium azide: a POISONOUS AND HAZARDOUS SUBSTANCE which should be handled by trained staff only.
Storage:	4 °C, -20 °C
Storage Comment:	Maintain refrigerated at 2-8 °C for up to 6 months. For long term storage store at -20 °C in small aliquots to prevent freeze-thaw cycles.
Expiry Date:	6 months



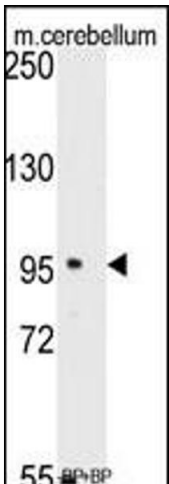
Immunohistochemistry (Paraffin-embedded Sections)

Image 1. Formalin-fixed and paraffin-embedded human brain tissue reacted with SEA antibody (C-term) (ABIN389214 and ABIN2839370) , which was peroxidase-conjugated to the secondary antibody, followed by DAB staining. This data demonstrates the use of this antibody for immunohistochemistry, clinical relevance has not been evaluated.



Western Blotting

Image 2. Western blot analysis of SEA Antibody (C-term) Pab (ABIN389214 and ABIN2839370) pre-incubated without(lane 1) and with(lane 2) blocking peptide in HL-60 cell line lysate. SEA (arrow) was detected using the purified Pab.



Western Blotting

Image 3. Western blot analysis of anti-SEA Antibody (C-term) (ABIN389214 and ABIN2839370) pre-incubated with(right lane) and without(left lane) blocking peptide in mouse cerebellum tissue lysate. SEA (arrow) was detected using the purified Pab.