

Datasheet for ABIN389224  
**anti-ANGEL2 antibody (AA 108-138)**



[Go to Product page](#)

2 Images

### Overview

Quantity:	400 µL
Target:	ANGEL2
Binding Specificity:	AA 108-138
Reactivity:	Human
Host:	Rabbit
Clonality:	Polyclonal
Conjugate:	This ANGEL2 antibody is un-conjugated
Application:	Western Blotting (WB), Immunohistochemistry (Paraffin-embedded Sections) (IHC (p))

### Product Details

Immunogen:	This ANGEL2 antibody is generated from rabbits immunized with a KLH conjugated synthetic peptide between 108-138 amino acids from the Central region of human ANGEL2.
Clone:	RB15012
Isotype:	Ig Fraction
Purification:	This antibody is prepared by Saturated Ammonium Sulfate (SAS) precipitation followed by dialysis against PBS.

### Target Details

Target:	ANGEL2
Alternative Name:	ANGEL2 ( <a href="#">ANGEL2 Products</a> )

## Target Details

---

Background: ANGEL 2 is a member of the CCR4/nocturin family.

Molecular Weight: 62339

Gene ID: 90806

NCBI Accession: [NP\\_653168](#)

UniProt: [Q5VTE6](#)

## Application Details

---

Application Notes: WB: 1:1000. IHC-P: 1:10~50

Restrictions: For Research Use only

## Handling

---

Format: Liquid

Buffer: Purified polyclonal antibody supplied in PBS with 0.09 % (W/V) sodium azide.

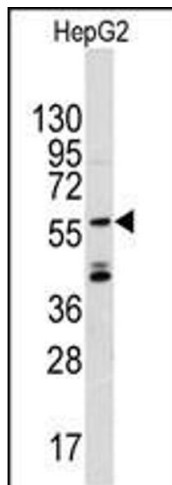
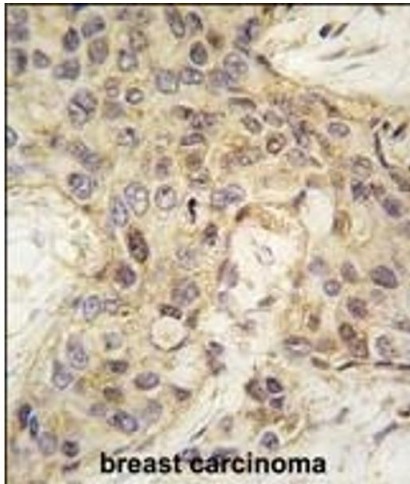
Preservative: Sodium azide

Precaution of Use: This product contains Sodium azide: a POISONOUS AND HAZARDOUS SUBSTANCE which should be handled by trained staff only.

Storage: 4 °C,-20 °C

Storage Comment: Maintain refrigerated at 2-8 °C for up to 6 months. For long term storage store at -20 °C in small aliquots to prevent freeze-thaw cycles.

Expiry Date: 6 months



### Immunohistochemistry (Paraffin-embedded Sections)

**Image 1.** Formalin-fixed and paraffin-embedded human breast carcinoma tissue reacted with ANGEL2 antibody (Center) (ABIN389224 and ABIN2839377) , which was peroxidase-conjugated to the secondary antibody, followed by DAB staining. This data demonstrates the use of this antibody for immunohistochemistry, clinical relevance has not been evaluated.

### Western Blotting

**Image 2.** Western blot analysis of anti-ANGEL2 Pab (ABIN389224 and ABIN2839377) in CEM cell line lysates (35 µg/lane). ANGEL2 (arrow) was detected using the purified Pab.