

Datasheet for ABIN389229
anti-ITGA6 antibody (Isoform 2)[Go to Product page](#)

4 Images

Overview

Quantity:	400 µL
Target:	ITGA6
Binding Specificity:	AA 1043-1072, Isoform 2
Reactivity:	Human
Host:	Rabbit
Clonality:	Polyclonal
Conjugate:	This ITGA6 antibody is un-conjugated
Application:	Western Blotting (WB), Immunofluorescence (IF), Immunohistochemistry (Paraffin-embedded Sections) (IHC (p))

Product Details

Immunogen:	This ITGA6 antibody is generated from rabbits immunized with a KLH conjugated synthetic peptide between 1043-1072 amino acids from isoform 2 of human ITGA6.
Clone:	RB15309
Isotype:	Ig Fraction
Predicted Reactivity:	C
Purification:	This antibody is purified through a protein A column, followed by peptide affinity purification.

Target Details

Target:	ITGA6
---------	-------

Target Details

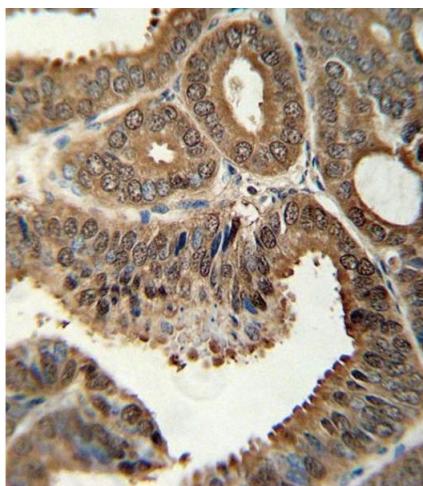
Alternative Name:	ITGA6 (ITGA6 Products)
Background:	The ITGA6 protein product is the integrin alpha chain alpha 6. Integrins are integral cell-surface proteins composed of an alpha chain and a beta chain. A given chain may combine with multiple partners resulting in different integrins. For example, alpha 6 may combine with beta 4 in the integrin referred to as TSP180, or with beta 1 in the integrin VLA-6. Integrins are known to participate in cell adhesion as well as cell-surface mediated signalling.
Gene ID:	3655
NCBI Accession:	NP_000201 , NP_001073286
Pathways:	CXCR4-mediated Signaling Events , Brown Fat Cell Differentiation , Integrin Complex

Application Details

Application Notes:	IF: 1:200. WB: 1:1000. WB: 1:1000. IHC-P: 1:10~50
Restrictions:	For Research Use only

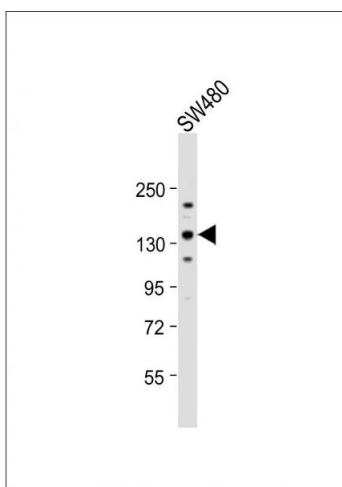
Handling

Format:	Liquid
Buffer:	Purified polyclonal antibody supplied in PBS with 0.09 % (W/V) sodium azide.
Preservative:	Sodium azide
Precaution of Use:	This product contains Sodium azide: a POISONOUS AND HAZARDOUS SUBSTANCE which should be handled by trained staff only.
Handling Advice:	Avoid freeze-thaw cycles.
Storage:	4 °C, -20 °C
Storage Comment:	Maintain refrigerated at 2-8 °C for up to 6 months. For long term storage store at -20 °C in small aliquots.
Expiry Date:	6 months



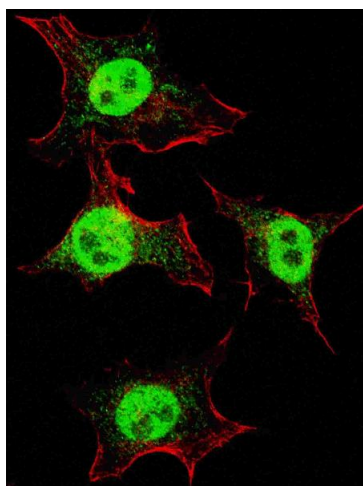
Immunohistochemistry (Paraffin-embedded Sections)

Image 1. Formalin-fixed and paraffin-embedded human colon carcinoma tissue reacted with ITGA6 Antibody (isoform 2) (ABIN389229 and ABIN2839381) , which was peroxidase-conjugated to the secondary antibody, followed by DAB staining. This data demonstrates the use of this antibody for immunohistochemistry, clinical relevance has not been evaluated.



Western Blotting

Image 2. Anti-ITGA6 Antibody (isoform 2) at 1:1000 dilution + S whole cell lysate Lysates/proteins at 20 µg per lane. Secondary Goat Anti-Rabbit IgG, (H+L), Peroxidase conjugated at 1/10000 dilution. Predicted band size : 119 kDa Blocking/Dilution buffer: 5 % NFDm/TBST.



Immunofluorescence

Image 3. Fluorescent confocal image of HeLa cells stained with ITGA6 (isoform 2) antibody. HeLa cells were fixed with 4 % PFA (20 min), permeabilized with Triton X-100 (0.2 %, 30 min). Cells were then incubated with (ABIN389229 and ABIN2839381) ITGA6 (isoform 2) primary antibody (1:200, 2 h at room temperature). For secondary antibody, Alexa Fluor® 488 conjugated donkey anti-rabbit antibody (green) was used (1:1000, 1h). Nuclei were counterstained with Hoechst 33342 (blue) (10 µg/mL, 5 min). Note the highly specific localization of the ITGA6 mainly to the nucleus, supported by Human Protein Atlas Data (<http://www.proteinatlas.org/ENSG00000091409>).

Please check the [product details page](#) for more images. Overall 4 images are available for ABIN389229.