

Datasheet for ABIN389230

anti-SLC16A1 antibody (C-Term)**1** Image**1** Publication[Go to Product page](#)

Overview

Quantity:	400 µL
Target:	SLC16A1
Binding Specificity:	AA 430-460, C-Term
Reactivity:	Human
Host:	Rabbit
Clonality:	Polyclonal
Conjugate:	This SLC16A1 antibody is un-conjugated
Application:	Western Blotting (WB)

Product Details

Immunogen:	This MCT1 (SLC16A1) antibody is generated from rabbits immunized with a KLH conjugated synthetic peptide between 430-460 amino acids from the C-terminal region of human MCT1 (SLC16A1).
Clone:	RB15099
Isotype:	Ig Fraction
Purification:	This antibody is prepared by Saturated Ammonium Sulfate (SAS) precipitation followed by dialysis against PBS.

Target Details

Target:	SLC16A1
Alternative Name:	MCT1 (SLC16A1) (SLC16A1 Products)

Target Details

Background:	SLC16A1 is a monocarboxylate transporter (MCT1) that mediates the movement of lactate and pyruvate across cell membranes import and export of these substrates by tissues such as erythrocytes, muscle, intestine, and kidney are ascribed largely to the action of a proton-coupled MCT (Garcia et al., 1994 [PubMed 8124722]).
Molecular Weight:	53944
NCBI Accession:	NP_001159968 , NP_003042
UniProt:	P53985
Pathways:	Warburg Effect

Application Details

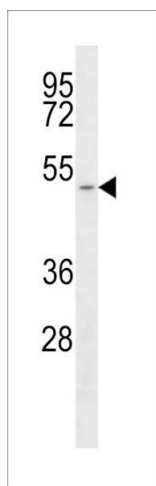
Application Notes:	WB: 1:1000
Restrictions:	For Research Use only

Handling

Format:	Liquid
Buffer:	Purified polyclonal antibody supplied in PBS with 0.09 % (W/V) sodium azide.
Preservative:	Sodium azide
Precaution of Use:	This product contains Sodium azide: a POISONOUS AND HAZARDOUS SUBSTANCE which should be handled by trained staff only.
Storage:	4 °C,-20 °C
Storage Comment:	Maintain refrigerated at 2-8 °C for up to 6 months. For long term storage store at -20 °C.
Expiry Date:	6 months

Publications

Product cited in:	Kevin Li-Chun, Schob, Zeller, Pulli, Ali, Wang, Chiou, Tsang, Lee, Stossel, Chen: "Gelsolin decreases actin toxicity and inflammation in murine multiple sclerosis." in: Journal of neuroimmunology , Vol. 287, pp. 36-42, (2015) (PubMed).
-------------------	--



Western Blotting

Image 1. Western blot analysis of anti-SLC16A1 Antibody (C-term) (ABIN389230 and ABIN2839382) in T47D cell line lysates (35 µg/lane). SLC16A1 (arrow) was detected using the purified Pab.